

# postal|bulletin

PUBLISHED SINCE MARCH 4, 1880

## PROTECT YOURSELF from Money Mule Scams



See page 3



# Contents

## COVER STORY

Protect Yourself from Money Mule Scams ..... 3

## POLICIES, PROCEDURES, AND FORMS UPDATES

### Manuals

DMM Revision: Permit Imprint Minimum Volumes ..... 4

ELM Revision: Combined Federal Campaign Program ..... 4

ELM Revision: Sex Discrimination Policy ..... 5

IMM Revision: First-Class Mail International Service ..... 5

IMM Revision: Individual Country Listing for Australia ..... 6

IMM Revision: Individual Country Listing for Japan ..... 6

IMM Revision: Individual Country Listing for Pakistan ..... 7

### Handbooks

Handbook AS-709 Revision: Purchase Card Local

Buying Policies and Procedures ..... 7

### Publications

Publication 431 Revision: Changes to Post Office Box

Service and Caller Service Fee Groups ..... 8

### Forms

PS Form 2181-D Revision: Disclosure and Authorization

for Consumer Reports and Investigative Consumer

Reports ..... 8

## ORGANIZATION INFORMATION

### Information Security

CyberSafe Training for Contractors: FY 21 Course is

Now Available ..... 9

Happening Now: Changes to the USPS Internet

Landscape ..... 9

### Product Management Mailing Services

Share Mail ..... 10

### Small Business Sales

Business Connect Kits are Coming ..... 31

### Stamp Services

Stamp Announcement 21-10: Espresso Drinks Stamps ..... 33

Stamp Stock Items Withdrawn from Regular Sale and

from Sale at Philatelic Centers ..... 34

Pictorial Postmarks Announcement ..... 35

How to Order the First-Day-of-Issue Digital Color or

Traditional Postmarks ..... 37

### Supply Management

USPS Headquarters Managers and Field Installation

Heads: March 2021 Annual Capital Property Review ..... 39

## PULL-OUT INFORMATION

### Fraud

Invalid USPS Corporate Account Numbers ..... 11

Missing, Lost, or Stolen U.S. Money Order Forms ..... 13

Missing, Lost, or Stolen Canadian Money Order Forms ..... 19

Verifying U.S. Postal Service Money Orders ..... 21

Counterfeit Canadian Money Order Forms ..... 21

Toll-Free Number Available to Verify Canadian

Money Orders ..... 21

### Other Information

Overseas Military/Diplomatic Mail ..... 23

Thrift Savings Plan Fact Sheet ..... 28

Freely Associated States Restrictions ..... 30

## POSTAL BULLETIN 2020 ANNUAL INDEX

2021 Annual Index ..... PB 22564 (1-28-21)

Find the latest in mail and delivery information  
and services offered by U.S. Postal®  
in the *Postal Bulletin* at  
[about.usps.com/postal-bulletin](https://about.usps.com/postal-bulletin)

**Mail Moment®**

# Cover Story

## Protect Yourself from Money Mule Scams

Money mules are people who receive and transfer money stolen from fraud victims. Some money mules know they've been recruited to assist criminal activity, but others become money mules without realizing their activity is benefiting fraudsters. These criminal elements use several methods to recruit victims:

- **Work-from-home scams.** A job posting offers easy money for reshipping packages, buying gift cards or postal money orders, or transferring money, which can be done at home.
- **Confidence scams.** A person or business you don't know offers a commission if you transfer money for them. Many of these scammers are active on social media sites, like Facebook and Instagram.
- **Lottery scams.** A person informs you that you need to transfer or accept money in order to collect a prize.
- **Romance scams.** A person you've met online or on an app who says they're romantically interested in you asks you to transfer money or packages.

Transferring money or valuables on behalf of others only benefits criminals, and may lead to serious consequences for you. Here are some of the best ways to protect yourself from money mule scams:

- **Don't engage in financial transactions with strangers.** This includes transferring money into and out of accounts you own or purchasing postal money

orders, gift cards, or virtual currency at the direction of others. Never give your personal information, such as your Social Security number or bank account number to someone else.

- **Don't take a job that promises easy money or involves sending or receiving money or packages.** If a job sounds too good to be true, it probably is — never take a job accepting or sending packages on behalf of others.
- **Check it out.** Check any work-from-home opportunity or money moving offer with a trusted family member or friend. You can also contact the local Better Business Bureau chapter, state corporation directory, and state attorney general's office to see if the offer is legitimate.
- **Report it.** Report money mule scams as soon as possible. Call the United States Postal Inspection Service<sup>®</sup> at 877-876-2455 or visit [uspis.gov/report](https://www.uspis.gov/report) to file a report. Also, report any suspected money mule email or social media scams to the platform provider.

For more information about money mule scams, visit [uspis.gov/money-mule](https://www.uspis.gov/money-mule).

— Communications, Governance, and Strategy,  
U.S. Postal Inspection Service, 2-25-21

# Policies, Procedures, and Forms Updates

## Manuals

### DMM Revision: Permit Imprint Minimum Volumes

Effective April 5, 2021, the Postal Service™ will revise *Mailing Standards of the United States Postal Service, Domestic Mail Manual (DMM®)*, section 604.5.1.2, to clarify the minimum volume standards regarding single-piece price mailings.

Currently, section 604.5.1.2(d) specifies that single-piece price mailings submitted under the terms of an approved manifest mailing system agreement with a minimum volume reduction provision, or single-piece mailings of First-Class Mail® letters when using electronic documentation, including piece-level barcode information, are required to be authorized by Business Acceptance Solutions. This revision will clarify that only single-piece price mailings submitted under the terms of an approved manifest mailing system agreement with a minimum volume reduction provision are required to be authorized by Business Acceptance Solutions.

Although this clarification will not be published in the DMM until April 5, 2021, the revised standard is effective immediately.

#### ***Mailing Standards of the United States Postal Service, Domestic Mail Manual (DMM)***

\* \* \* \* \*

#### **600 Basic Standards for All Mailing Services**

\* \* \* \* \*

### ELM Revision: Combined Federal Campaign Program

Effective March 31, 2021, the Postal Service™ will revise the *Employee and Labor Relations Manual (ELM)*, part 617, to update Combined Federal Campaign (CFC) program guidelines to reflect changes that the Office of Personnel Management (OPM) made to regulations and ethics rules governing the CFC.

The update addresses significant changes to the CFC structure, including methods of collecting and mailing pledges; procedures that campaign workers must follow when managing, coordinating, and canvassing the campaign; and strategies for running a campaign under the new ethics rules and OPM regulations.

Although the Postal Service will not publish these revisions in the ELM until March 31, 2021, the updated guidelines are effective immediately.

#### **604 Postage Payment Methods and Refunds**

\* \* \* \* \*

#### **5.0 Permit Imprint (Indicia)**

##### **5.1 General Standards**

\* \* \* \* \*

##### **5.1.2 Minimum Volume**

\* \* \* \* \*

[Revise the text of item d. to read as follows:]

- d. Single-piece price mailings submitted under the terms of an approved manifest mailing system agreement with a minimum volume reduction provision as authorized by Business Acceptance Solutions (see 608.8.0 for address), or single-piece mailings of First-Class Mail letters when using electronic documentation, including piece-level barcode information.

\* \* \* \* \*

The Postal Service will incorporate this revision into the next edition of the online DMM, which is available via Postal Explorer® at [pe.usps.com](https://pe.usps.com).

— Product Classification,  
Product Solutions, 2-25-21

The Postal Service will incorporate these revisions into the next edition of the online ELM, which is available on the PolicyNet website:

- Go to [blue.usps.gov](https://blue.usps.gov).
- In the left-hand column, click *Essential Links*, and then click *PolicyNet*.
- Go to the right-hand side under “Published Forms and Directives.”
- Click *Manuals*.

The direct URL for the Postal Service PolicyNet website is [blue.usps.gov/cpim](https://blue.usps.gov/cpim).

— National Human Resources,  
Human Resources, 2-25-21

### ELM Revision: Sex Discrimination Policy

Effective February 25, 2021, the Postal Service™ is revising the *Employee and Labor Relations Manual (ELM)*, Chapters 3, 4, 6, 7, and 8, to update USPS® policy prohibiting sex discrimination in personnel hiring and placement, so that the ELM is consistent with a U.S. Supreme Court decision issued June 2020.

In the decision, the Court states that “an employer violates Title VII when it intentionally fires an individual employee based in part on sex” and that “an individual’s homosexuality or transgender status is not relevant to employment decisions. That’s because it is impossible to discriminate against a person for being homosexual or transgender without discriminating against that individual based on sex.”

Although the Postal Service will not publish these revisions in the ELM until September 2021, the standards are effective immediately.

The Postal Service will incorporate these revisions into the September 2021 edition of the online ELM, which is available on the PolicyNet website:

- Go to [blue.usps.gov](https://blue.usps.gov).
- In the left-hand column, click *Essential Links*, and then click *PolicyNet*.
- Go to the right-hand side under “Published Forms and Directives.”
- Click *Manuals*.

The direct URL for the Postal Service PolicyNet website is [blue.usps.gov/cpim](https://blue.usps.gov/cpim).

— *Equal Employment Opportunity Compliance and Appeals, Labor Relations, 2-25-21*

### IMM Revision: First-Class Mail International Service

Effective February 25, 2021, the Postal Service™ is revising *Mailing Standards of the United States Postal Service, International Mail Manual (IMM)®*, parts 134 and 271, to align the text with the standards established by the Universal Postal Convention.

This article includes necessary revisions that were inadvertently not included in the following two *Postal Bulletin* articles:

- “IMM Revision: Changes to Pricing and Products for International Mailing Services” in *Postal Bulletin* 22482 (12-7-17, pages 16–20 and 41–44), which noted that merchandise was no longer permitted in First-Class Mail International® service but had to be sent by First-Class Package International Service® or another acceptable service.
- “IMM Revision: First-Class Mail International Flats Weight Limit” in *Postal Bulletin* 22520 (5-23-19, pages 7–9), which noted a lower maximum weight limit on First-Class Mail International large envelopes (flats).

Consequently, effective February 25, 2021, the Postal Service™ is revising IMM parts 134 and 271 to reflect the actual standards.

#### ***Mailing Standards of the United States Postal Service, International Mail Manual (IMM)***

*	*	*	*	*
<b>1</b>	<b>International Mail Services</b>	*	*	*
<b>130</b>	<b>Mailability</b>	*	*	*
<b>134</b>	<b>Valuable Articles</b>	*	*	*

#### **134.1 Service Options**

\* \* \* \* \*

*[Revise item a. to read as follows (removing the reference to First-Class Mail International service):]*

- a. First-Class Package International Service with Registered Mail service.

\* \* \* \* \*

#### **2 Conditions for Mailing**

\* \* \* \* \*

#### **270 Free Matter for the Blind**

#### **271 Description and Physical Characteristics**

\* \* \* \* \*

#### **271.2 Weight Limits**

\* \* \* \* \*

*[Revise the chart to read as follows:]*

Maximum Weight Limit	Mail Service
3.5 ounces	First-Class Mail International letters
15.994 ounces	First-Class Mail International flats
4 pounds	Priority Mail International Flat Rate Envelopes and Small Flat Rate Priced Boxes First-Class Package International Service
15 pounds	Priority Mail International parcels Priority Mail International Medium and Large Flat Rate Boxes

\* \* \* \* \*

Although effective February 25, 2021, the Postal Service will incorporate these revisions into the next edition of the online IMM, which is available via Postal Explorer® at [pe.usps.com](https://pe.usps.com).

— *Product Classification, Product Solutions, 2-25-21*

## IMM Revision: Individual Country Listing for Australia

Effective February 25, 2021, the Postal Service™ is revising the International Country Listing for Australia in *Mailing Standards of the United States Postal Service, International Mail Manual (IMM®)* to note that the Australian Department of Agriculture, Water, and the Environment has imposed a temporary ban for raw forms of beans, grains, nuts, rice, and seeds. Additionally, mailable seeds, including flower or food seeds, must be accompanied by a phytosanitary certificate.

This revision is based on a formal request that Australia Post (the designated postal operator of Australia) made through the Universal Postal Union via *International Bureau Circular* 139, dated September 28, 2020, and International Postal Corporation Exceptional Event 45, dated September 30, 2020.

### **Mailing Standards of the United States Postal Service, International Mail Manual (IMM)**

\* \* \* \* \*

#### **Individual Country Listings**

\* \* \* \* \*

#### **Australia**

#### **Country Conditions for Mailing**

\* \* \* \* \*

#### **Restrictions**

\* \* \* \* \*

[Add an entry in alphabetical order to read as follows:]

Raw forms of beans, grains, nuts, rice, and seeds are temporarily banned by the government of Australia.

**Note:** Exceptions include the following: Goods that are thermally or chemically processed and preserved; fresh vegetables; oils derived from vegetables or seed; and plant-based raw materials, such as starch, sugar, and pigment. Seeds that may be imported — including flower or food seeds — must comply with importation conditions or be covered by a valid import permit (i.e., a phytosanitary certificate) before arriving in Australia. For additional information, see Australia’s Biosecurity Import Conditions system at [agriculture.gov.au/import/online-services/bicon](http://agriculture.gov.au/import/online-services/bicon).

\* \* \* \* \*

Although effective February 25, 2021, the Postal Service will incorporate this revision into the next edition of the online IMM, which is available via Postal Explorer® at [pe.usps.com](http://pe.usps.com).

— Product Classification,  
Product Solutions, 2-25-21

## IMM Revision: Individual Country Listing for Japan

Effective February 25, 2021, the Postal Service™ is revising the International Country Listing for Japan in *Mailing Standards of the United States Postal Service, International Mail Manual (IMM®)* to note additional import requirements for mail items containing plants sent to Japan.

This revision is based on a formal request that Japan Post (the designated postal operator of Japan) made through the Universal Postal Union via *International Bureau Circular* 152, dated October 19, 2020.

### **Mailing Standards of the United States Postal Service, International Mail Manual (IMM)**

\* \* \* \* \*

#### **Individual Country Listings**

\* \* \* \* \*

#### **Japan**

#### **Country Conditions for Mailing**

\* \* \* \* \*

#### **Restrictions**

\* \* \* \* \*

[Revise the entry that begins with “Plants” to read as follows:]

Plants are limited to parcels and small packets only, and are prohibited unless accompanied by a phytosanitary certificate issued by the country of origin, in accordance with Japan’s national legislation. For a U.S. mailer, the phytosanitary certificate must come from the United States Department of Agriculture (USDA). Japan’s national legislation authorizes the destruction of items that do not have the proper documentation. Japan’s national legislation recommends that the outer package contains the words “Contains plants,” “Requires plant inspection,” “Plants,” “Plant seeds,”

or similar wording. Confirmation of import conditions and additional guidance is available through the Ministry of Agriculture, Forestry, and Fisheries at [pps.go.jp/english/index.html](https://pps.go.jp/english/index.html).

\* \* \* \* \*

Although effective February 25, 2021, the Postal Service will incorporate this revision into the next edition of the online IMM, which is available via Postal Explorer® at [pe.usps.com](https://pe.usps.com).

— Product Classification, Product Solutions, 2-25-21

### IMM Revision: Individual Country Listing for Pakistan

Effective February 25, 2021, the Postal Service™ is revising the Individual Country Listing for Pakistan in *Mailing Standards of the United States Postal Service*, International Mail Manual (IMM®) to note that Pakistan is updating its listing of prohibited items to include obscene or immoral articles.

This revision is based on a formal request that Pakistan Post (the designated postal operator of Pakistan) made through the Universal Postal Union via *International Bureau Circular* 193, dated December 14, 2020.

#### **Mailing Standards of the United States Postal Service, International Mail Manual (IMM)**

\* \* \* \* \*

##### **Individual Country Listings**

\* \* \* \* \*

#### **Pakistan**

##### **Country Conditions for Mailing**

##### **Prohibitions**

\* \* \* \* \*

[Add a new entry in alphabetical order to read as follows:]

Obscene or immoral articles, including adult toys and related items.

\* \* \* \* \*

Although effective February 25, 2021, the Postal Service will incorporate this revision into the next edition of the online IMM, which is available via Postal Explorer® at [pe.usps.com](https://pe.usps.com).

— Product Classification, Product Solutions, 2-25-21

## Handbooks

### Handbook AS-709 Revision: Purchase Card Local Buying Policies and Procedures

Effective February 2021, the Postal Service™ revised Handbook AS-709, *Purchase Card Local Buying Policies and Procedures*, Chapters 1–4, to update policies and procedures governing the use of purchase cards. Additionally, sections were revised for clarity, and Chapter 5 content was revised to become part of Chapter 4. For details on the changes made, see the “Summary of Changes” at the beginning of Handbook AS-709.

Revised Handbook AS-709 is now available on the PolicyNet website:

- Go to [blue.usps.gov](https://blue.usps.gov).
- In the left-hand column under “Essential Links,” click *PolicyNet*.
- Go to the right-hand side under “Published Forms and Directives.”
- Click *Handbooks*.

The direct URL for the Postal Service PolicyNet website is [blue.usps.gov/cpim](https://blue.usps.gov/cpim).

— Supply Management Infrastructure, Supply Management, 2-25-21

## Publications

### Publication 431 Revision: Changes to Post Office Box Service and Caller Service Fee Groups

Effective February 25, 2021, Publication 431, *Post Office Box Service and Caller Service Fee Groups*, is revised to include the following changes.

#### Publication 431, *Post Office Box Service and Caller Service Fee Groups*

\* \* \* \* \*

[Add the following entries:]

ZIP Code	Fee Group
05843	4

\* \* \* \* \*

[Delete the following entries:]

ZIP Code	Fee Group
03860A	5
05483	4
07195	6
07198	6

\* \* \* \* \*

The online version of Publication 431 is dated July 2013. Publication 431 is currently available on the Postal Service™ PolicyNet website ([blue.usps.gov/cpim](http://blue.usps.gov/cpim)):

- Go to [blue.usps.gov](http://blue.usps.gov).
- In the left-hand column, click *Essential Links*, and then click *PolicyNet*.
- Go to the right-hand side under “Published Forms and Directives.”
- Click *Publications*.

Offices with WebBATS Manager/Supervisor access can view current Publication 431 information by going to the WebBATS Edit Facility Information page, as follows:

1. Go to the WebBATS main menu, and select Utility> Facility>Edit Facility option.
2. View the Fee Group field on the Edit Facility Information page.

— Post Office Operations,  
Retail and Post Office Operations, 2-25-21

## Forms

### PS Form 2181-D Revision: Disclosure and Authorization for Consumer Reports and Investigative Consumer Reports

Effective February 2021, the Postal Service™ revised PS Form 2181-D, *Disclosure and Authorization for Consumer Reports and Investigative Consumer Reports*, to make both “The Summary of Rights” and the PS Form 2181-D disclosure into standalone documents. This change will have no impact on the way information is provided to applicants and employees.

Revised PS Form 2181-D is now available on the PolicyNet website:

- Go to [blue.usps.gov](http://blue.usps.gov).
- In the left-hand column under “Essential Links,” click *PolicyNet*.
- Go to the right-hand side under “Published Forms and Directives,” click *Forms*, and then click on the range 2000–2999.
- Scroll down to the form entry and click the PDF icon.

The direct URL for the Postal Service PolicyNet website is [blue.usps.gov/cpim](http://blue.usps.gov/cpim).

— National Human Resources,  
Human Resources, 2-25-21



# Organization Information

## Information Security

### CyberSafe Training for Contractors: FY 21 Course is Now Available

CyberSafe training was developed for all Postal Service™ employees and contractors as part of the mandatory annual effort to protect USPS® data. The fiscal year (FY) 21 CyberSafe training course is now available for all USPS contractors:

- **CyberSafe Fundamentals with Data Protection.**

This course provides the core skills and knowledge needed to adhere to current USPS cybersecurity policy. Participants will also learn best practices for handling sensitive and sensitive-enhanced information to keep USPS electronic data secure.

The deadline for completing the course is **April 23, 2021**. Contractors who do not meet the deadline will be subject to limited ACE system access until the course is completed.

Protecting employee, customer, and supplier data is a priority for the Postal Service. Taking this required course enables USPS contractors to safeguard critical data and prevent cyber threats. For more information, visit the CyberSafe training page on *Blue* ([blue.usps.gov/cyber/training.htm](https://blue.usps.gov/cyber/training.htm)) or contact [CyberSafeComms@usps.gov](mailto:CyberSafeComms@usps.gov).

Log into HERO now to complete the CyberSafe Fundamentals with Data Protection course: [usps.csod.com/LMS/catalog/Welcome.aspx?tab\\_page\\_id=-67&tab\\_id=-1](https://usps.csod.com/LMS/catalog/Welcome.aspx?tab_page_id=-67&tab_id=-1).

— Corporate Information Security Office,  
Chief Information Security Officer  
and Digital Solutions, 2-25-21

### Happening Now: Changes to the USPS Internet Landscape

Malware, phishing, and ransomware — these are just a few of the common cyberthreats facing the Postal Service™ day in and day out. Every year, these types of threats grow in frequency and sophistication.

To help protect the Postal Service from these threats, the Internet Alignment Initiative was rolled out on February 8, 2021. This initiative launched a multi-level Internet access structure for all ACE users on USPS-issued devices. This includes desktops, laptops, smartphones (when on the USPS network), and tablets.

The initiative will strengthen the Postal Service's cybersecurity posture, mitigate evolving cyberthreats, and align ACE users' Internet privileges with their job function.

While the Internet is a great tool, it has a dark side. Just a single visit to the wrong website or one click of a malicious link or attachment could damage the Postal Service network. That's why cybersecurity is a top priority for executive leadership and a shared responsibility for all Postal Service employees and contractors.

"This initiative provides greater safeguards to protect the Postal Service and its employees, customers, and partners from cyberthreats," said Greg Crabb, USPS vice president and chief information security officer.

The deadline for requesting Internet access in eAccess is **March 19, 2021**. ACE users who do not meet the deadline will have their Internet access defaulted to a basic level. This could then impact the user's ability to access websites necessary to fulfill job functions.

**Note:** The United States Postal Inspection Service® (USPIS®) fully supports the initiative. USPIS will receive separate communications with details and specific action steps for its ACE users.

For more information, visit the Internet Alignment Initiative on *Blue* at [blue.usps.gov/cyber/internet-access-and-mobile-protection-initiatives/internet-access-initiative.htm](https://blue.usps.gov/cyber/internet-access-and-mobile-protection-initiatives/internet-access-initiative.htm).

To submit questions or comments about the Internet Alignment Initiative, send an email to CISO at [X5TSP0@usps.gov](mailto:X5TSP0@usps.gov).

— Corporate Information Security Office,  
Chief Information Security Officer  
and Digital Solutions, 2-25-21

## Product Management Mailing Services

### Share Mail

Share Mail<sup>®</sup> is a unique form of commercial single-piece First-Class Mail<sup>®</sup> letters or postcards, addressed to any domestic address, that weighs no more than 1 ounce each, and uses an Intelligent Mail<sup>®</sup> barcode (IMb<sup>®</sup>) as a payment mechanism.

Share Mail is an easy and convenient way for mailers to send their customers and other stakeholders hard copy communication (e.g., advertisements, coupons, political messaging, donation requests, etc.) to be shared with others. It is a “many-to-many” product, and differs from Business Reply Mail<sup>®</sup> (BRM), where a reply piece goes to one specific address.

Share Mail permits businesses and organizations to mail their customers a letter or postcard anywhere in the United States, either as an individual item in an envelope, or as part of a self-mailer. Without having to affix postage, customers may then mail the Share Mail mailpieces to friends and family, sharing the information in the mailpiece. Recipients of the Share Mail mailpiece may claim the mailer’s sales or coupon offer online or in-store.

Postage for the Share Mail mailpieces is automatically paid through the mailer’s postage due or BRM account, based on the IMb. There is no need to open permit accounts at multiple Post Offices where those pieces are destined. These mailpieces must meet First-Class Mail processing, handling, and delivery standards.

Mailers wishing to participate in the Share Mail program must, at a minimum, meet the following requirements:

- a. Have an Enterprise Payment System account link with USPS<sup>®</sup>;
- b. Have a Business Customer Gateway account;
- c. Have a Business Reply Mail or Postage Due account;
- d. Submit production quality mailpiece files to the USPS Share Mail program office for pre-approval and have received subsequent USPS approval; and
- e. Have approved mailpieces that bear unique or static Intelligent Mail barcodes, an approved permit imprint indicia in the upper-right hand corner of the mailpiece, and facing identification mark E (FIM E) printed on the mailpiece as specified in section 202.8.0 of *Mailing Standards of the United States Postal Service*, Domestic Mail Manual.

Mailers wishing to participate in the Share Mail program must submit their request to the Share Mail program office at [sharemail@usps.gov](mailto:sharemail@usps.gov). Mailers may also submit any questions to the Share Mail program office website.

For more information on the Share Mail program, refer to updated Publication 600, *Share Mail*, which is available at [about.usps.com/publications/pub600.pdf](http://about.usps.com/publications/pub600.pdf).

— *Product Management Mailing Services,  
Product Solutions, 2-25-21*

# Pull-Out Information

## Fraud

### Invalid USPS Corporate Account Numbers

Provide this listing to Contract Postal Units and acceptance clerks in non-POS locations without intranet access to validate a USPS Corporate Account (USPSCA) number online. For all other locations, online USPSCA validation is preferred. This list supersedes all previous notices, which you must recycle.

Acceptance clerks must not accept Priority Mail Express® shipments bearing an invalid USPSCA number in the “Payment by Account” or “Agreement Number” section of the label or form.

**Note:** The first 6 digits of a 9-digit Custom Designed Service and Next Day Pickup Agreement make up the Corporate Account Number.

005789	110008	113095	210591	220496	221561	232045	272172	274303	277014	282747	286160	293219
006267	110009	113276	210612	220535	221578	232296	272176	274356	277015	282758	286171	293223
007331	110010	113319	210614	220610	221579	232298	272206	274360	277031	282783	286173	293230
007332	110013	113337	210619	220680	221586	232319	272207	274370	277046	282923	286181	293275
007345	110019	113345	210662	220699	221594	232386	272246	274377	277056	282937	286615	293293
007355	110249	113604	210695	220728	221625	232405	272257	274382	277061	282942	287041	293318
007374	110292	113867	210760	220733	221640	232407	272274	274389	277070	282948	287064	293321
007382	110534	113888	212885	220812	221646	232422	272303	275001	277132	282953	287210	293334
007397	110690	113994	220003	220825	221659	232428	272323	275004	278001	282955	287860	293400
008018	110818	114003	220004	220853	221663	235001	272336	275009	280001	282966	288012	293552
008033	110841	114149	220005	220861	221692	235312	272340	275010	280137	283212	288107	293553
008079	111336	114457	220008	220871	222001	235349	273004	275016	280151	283326	288129	293554
008097	111374	114493	220024	220884	222003	235366	273006	275018	280153	283377	288131	293555
008111	111934	114497	220026	220888	222043	235443	273008	275022	280186	283425	291101	293571
009249	111972	117178	220030	221002	222088	235445	273014	275035	280310	283429	292223	294226
011263	112055	118092	220035	221014	222108	235456	273048	275063	280781	283522	292242	294250
013104	112078	126080	220048	221030	222118	235509	273051	275107	281001	283564	292275	294313
018489	112103	142040	220054	221081	222143	235557	273064	275150	281055	283593	292415	294359
047001	112106	142440	220065	221119	222171	236300	273067	275155	281118	283740	292508	294363
052017	112117	156001	220070	221126	222246	270002	273100	275207	281147	284006	292534	294461
052050	112118	165263	220121	221156	223001	270006	273106	275208	281153	284021	292561	294489
060015	112120	173053	220130	221188	223020	270019	273112	275556	281154	284030	292565	294496
061013	112121	192367	220153	221202	223039	270035	273123	275604	281471	284032	292588	294561
062049	112124	192534	220190	221208	223046	270039	273126	275621	281730	284281	292620	294585
071860	112127	197200	220227	221211	223064	270050	273143	275918	282004	285001	292621	294589
075937	112135	200059	220232	221222	223073	270051	274001	276002	282030	285012	292644	294598
076896	112141	200493	220235	221223	223100	271011	274002	276004	282071	286002	292648	294600
077022	112142	200957	220239	221258	223258	271027	274011	276006	282081	286003	292660	294610
085675	112144	207655	220243	221276	223290	271068	274017	276009	282100	286004	292669	294620
088064	112145	207740	220247	221280	223379	271075	274029	276014	282101	286007	292700	294630
096136	112391	207943	220253	221285	223393	271099	274060	276019	282102	286008	292710	294640
103323	112716	208225	220269	221309	225301	271103	274080	276023	282103	286009	292722	294650
103371	112756	208293	220270	221315	225303	271131	274090	276029	282157	286010	292741	294660
103377	112808	208559	220287	221341	226009	271139	274123	276030	282160	286012	292742	295344
103464	113002	208664	220297	221359	226058	271140	274150	276031	282208	286016	292743	295384
103487	113006	208666	220305	221372	229004	271173	274175	276039	282320	286045	292744	295418
103490	113007	208858	220340	221378	229008	272001	274177	276057	282341	286059	292774	295430
103495	113011	209091	220349	221392	229057	272002	274187	276061	282367	286074	293076	295449
103587	113012	209199	220388	221393	229101	272006	274226	276140	282377	286085	293080	295476
103839	113015	210007	220407	221472	229112	272036	274230	276247	282436	286102	293086	295478
103914	113019	210222	220413	221495	229116	272080	274240	276611	282437	286117	293100	295481
105501	113027	210456	220462	221504	229121	272095	274256	276801	282530	286131	293129	295701
105850	113032	210466	220463	221530	230019	272121	274282	277007	282569	286150	293137	295720
110001	113038	210490	220464	221534	231008	272130	274301	277011	282578	286151	293210	296162
110006	113040	210526	220467	221555	231029	272160	274302	277013	282717	286154	293217	296193

296247	300521	301343	331551	480043	481127	481292	481729	483396	641241	770089	770982	921926
296251	300523	301349	334013	480044	481129	481296	481741	483435	641245	770091	770987	926037
296280	300530	301355	358215	480050	481137	481297	481768	483505	641257	770092	770990	926596
296356	300537	301358	378122	480051	481141	481300	481769	483591	641270	770093	771070	926603
296382	300540	301360	<b>405006</b>	480061	481159	481301	481859	483888	641282	770094	771468	927439
296409	300541	301361	410032	480063	481162	481305	481860	483901	641387	770095	773085	930062
296425	300548	301373	410191	480078	481167	481306	481886	483909	641405	770096	773087	930359
296427	300549	301375	410200	480081	481180	481309	481904	483912	641436	770097	774036	931775
296433	300550	301382	410223	480086	481191	481314	481946	483975	641444	770098	774072	940612
296469	300551	301385	410224	480087	481193	481315	481965	483989	641482	770100	774073	940822
296474	300553	301386	410226	480088	481196	481316	481987	483991	641514	770101	774077	951234
296513	300555	301388	410227	480089	481205	481319	481997	483992	641533	770102	774078	958916
296521	300560	301413	430005	480092	481207	481320	482174	484027	641890	770103	774080	967355
296526	300626	301417	430046	480097	481208	481321	482300	484047	641955	770104	774081	967416
296530	300630	301444	430077	480100	481211	481324	482308	485081	641979	770106	774083	968634
296531	300745	301446	430109	480101	481212	481328	482376	485215	641997	770109	774360	968732
296535	300746	301452	430122	480103	481214	481332	482415	485337	654100	770110	775052	968768
296537	300747	301455	430135	480104	481221	481334	482466	489274	657200	770111	775054	968836
296553	300774	301475	430175	480106	481223	481335	482482	492014	658146	770113	775056	969036
296554	300795	301489	432046	480107	481227	481337	482508	492113	658205	770115	775058	970792
297067	300816	301493	432131	480112	481228	481338	482614	492124	662004	770116	775060	970873
297079	300836	301496	432165	480114	481231	481339	482649	<b>530019</b>	662084	770117	775061	971031
297080	300873	301497	432320	480121	481235	481340	482655	553008	662276	770118	775062	971104
297081	300882	301499	432367	480122	481236	481345	482715	<b>600046</b>	662279	770119	777027	971130
297101	300901	301500	432677	480123	481238	481349	482719	600445	662319	770120	777028	973288
297301	300962	301501	432781	480124	481243	481350	482737	600683	<b>701056</b>	770121	778027	982271
<b>300003</b>	300967	301503	432842	480138	481247	481351	482776	600944	741667	770124	787114	982277
300016	300985	301504	432940	480302	481249	481352	482933	602139	750004	770187	<b>800083</b>	982532
300038	300998	301506	441339	480367	481257	481354	482957	602866	770013	770255	802486	995009
300102	301038	301509	447145	480426	481258	481355	482991	604201	770040	770331	803135	995197
300146	301047	301513	450020	480436	481260	481356	482998	630640	770041	770340	803137	995319
300149	301053	301516	450148	480483	481265	481359	483074	631971	770054	770376	805008	995465
300207	301114	301517	450189	480586	481268	481360	483088	637107	770055	770758	816100	995524
300252	301143	301520	451054	480655	481269	481361	483121	641029	770057	770880	833993	995777
300317	301204	301526	452004	480674	481270	481362	483131	641080	770062	770929	895535	997150
300359	301205	301527	452056	480777	481273	481389	483155	641097	770065	770950	<b>907342</b>	997237
300385	301220	301529	454282	480840	481275	481420	483275	641120	770070	770952	907409	998134
300390	301233	301534	454338	480866	481276	481453	483279	641125	770071	770960	907803	
300409	301262	301537	454467	480916	481278	481503	483295	641202	770072	770964	908107	
300509	301286	301541	480004	480998	481281	481620	483329	641211	770073	770973	910374	
300510	301289	301543	480024	480999	481282	481636	483352	641225	770077	770977	914932	
300512	301308	301546	480029	481111	481283	481665	483376	641230	770079	770978	915390	
300513	301329	305006	480032	481119	481289	481713	483393	641238	770083	770981	921115	

## Missing, Lost, or Stolen U.S. Money Order Forms

**Do Not Cash — Upon Receipt, Notify Local Postal Inspectors**

Provide this listing to all Postal Service™ employees responsible for accepting and cashing postal money orders. Destroy all interim notices when the numbers listed appear in the *Postal Bulletin*. The new money order serial

numbers consist of the first 10 digits. The eleventh digit is a check digit only.

Do not cash outdated money orders **104 151 601 to 692 600 000**. Advise holders to send invalid money orders to Canada Post Corporation, Ottawa, Canada K1A 0B1. Check for altered dollar amounts by holding money orders to the light.

<b>010 001 0200</b>	to	<b>0299</b>	044 087 3457	to	3499	084 478 3920	to	3999	176 281 7963	to	7999
010 504 1932	to	1999	044 087 4000	to	4099	086 000 8271	to	8299	176 731 6586	to	6599
011 582 1889	to	1899	044 226 2487	to	2512	086 798 3840	to	3849	178 254 5000	to	9999
011 588 2900	to	3099	044 306 4200	to	4299	088 404 4472	to	4499	178 881 9900	to	9999
012 441 0784	to	0799	044 306 4370	to	4599	088 404 5584	to	5699	<b>180 031 2089</b>	to	<b>2098</b>
012 579 5675	to	5699	045 524 4121	to	4298	088 757 8688	to	8699	180 403 7723	to	7741
013 289 6176	to	6199	046 800 9870	to	9899	088 757 9400	to	9499	180 428 4580	to	0599
013 610 0014	to	0099	047 352 4000	to	4099	089 358 2248	to	2257	182 368 7544	to	0599
014 932 1000	to	1099	048 383 7650	to	7659	<b>090 663 9678</b>	to	<b>9684</b>	182 475 3229	to	3258
014 972 0800	to	0899	048 396 3647	to	3699	091 818 0071	to	0099	182 475 3904	to	3933
015 363 0065	to	0099	<b>051 142 0755</b>	to	<b>0799</b>	093 106 9346	to	9355	182 631 0031	to	0099
017 028 3200	to	3299	051 774 8857	to	8899	093 203 0500	to	0599	182 911 6539	to	6600
018 569 5333	to	5399	051 781 2875	to	2885	093 684 3630	to	3699	184 218 2760	to	2799
018 986 5264	to	5299	051 977 7010	to	7023	094 081 5074	to	5099	185 828 1474	to	1499
019 518 2814	to	2899	052 058 7115	to	7199	094 216 2555	to	2599	186 132 7583	to	0599
020 698 5159	to	5199	054 450 1130	to	1167	094 580 7062	to	7099	186 629 0589	to	0599
<b>020 844 7307</b>	to	<b>7399</b>	057 670 0563	to	0599	094 639 4200	to	4299	187 184 6177	to	0199
020 972 8948	to	8999	058 187 3836	to	3899	095 070 7186	to	7199	187 323 8200	to	8299
022 021 9110	to	9181	058 523 3003	to	3099	095 076 8300	to	8399	187 441 6080	to	6099
022 037 1411	to	1499	058 591 1153	to	1299	095 354 6864	to	6899	188 831 6774	to	6799
022 527 9201	to	9210	058 895 3746	to	3799	097 224 1350	to	1599	188 835 6370	to	6399
022 529 1882	to	1899	059 986 0814	to	0899	<b>100 160 3800</b>	to	<b>3899</b>	189 083 1064	to	1099
023 637 7169	to	7199	<b>060 406 7650</b>	to	<b>7699</b>	104 667 6400	to	6499	189 660 9583	to	9599
024 380 4100	to	4199	063 491 8122	to	8199	104 876 8937	to	8999	<b>191 179 0377</b>	to	<b>0399</b>
024 496 6870	to	6896	063 916 9968	to	9999	112 049 4413	to	4499	192 050 5762	to	5781
025 092 0987	to	0999	064 091 4500	to	4599	112 870 9765	to	9799	194 456 8600	to	0699
025 369 5535	to	5599	065 170 0471	to	0499	113 319 2000	to	2099	195 194 6881	to	6899
025 729 1151	to	1199	065 255 7909	to	7999	114 402 3850	to	3899	195 874 1112	to	1199
025 729 1643	to	1799	065 392 6345	to	6399	114 866 5368	to	5397	196 979 0524	to	0599
026 492 3180	to	3199	066 099 2014	to	2099	116 154 2800	to	2899	197 244 6100	to	6199
027 361 0430	to	0499	066 648 2880	to	2899	116 986 4400	to	4499	197 244 6300	to	6399
027 369 4482	to	4495	066 787 3639	to	3699	117 175 1647	to	5169	197 244 6400	to	6499
027 671 8762	to	8776	066 845 7500	to	9999	117 951 4687	to	4699	197 244 6500	to	6599
027 787 9886	to	9899	067 093 3869	to	3899	117 951 5200	to	5299	197 244 6600	to	6699
027 965 9487	to	9499	068 895 0334	to	0399	119 786 3051	to	3064	197 244 6700	to	6799
028 100 8069	to	8099	<b>070 724 4488</b>	to	<b>4499</b>	119 815 8961	to	6199	197 244 6800	to	8999
028 191 1852	to	1999	070 841 9181	to	9199	119 850 7400	to	7499	198 285 2556	to	2566
028 850 3000	to	3199	070 844 2546	to	2599	119 850 7700	to	7999	199 105 0778	to	0799
029 510 1500	to	1599	070 916 1340	to	1399	<b>121 634 0460</b>	to	<b>0499</b>	199 678 2968	to	2999
<b>030 687 0903</b>	to	<b>0999</b>	071 047 5768	to	5799	122 451 9879	to	9899	<b>202 748 5133</b>	to	<b>5199</b>
030 701 3442	to	3499	071 179 9800	to	9899	122 714 6805	to	6900	202 748 5245	to	5299
031 077 4507	to	4799	071 386 3682	to	3699	124 916 0304	to	0499	202 748 5300	to	5399
032 295 7500	to	9999	071 507 6840	to	6899	126 423 0136	to	0169	202 748 5400	to	5499
034 394 1000	to	1099	072 045 9641	to	9699	127 500 2328	to	2399	203 256 1240	to	1299
034 943 0400	to	0799	072 675 8287	to	8299	<b>160 901 2254</b>	to	<b>2299</b>	204 230 3577	to	3595
035 035 4337	to	4399	073 763 0867	to	0876	161 103 6581	to	6599	205 019 0174	to	0199
037 312 7500	to	7599	073 763 0878	to	0887	161 194 2857	to	0899	206 936 3184	to	3199
037 706 9578	to	9599	073 763 0889	to	0898	162 032 4447	to	4499	207 196 9900	to	9999
037 805 3677	to	3699	077 617 5481	to	5499	163 257 1085	to	1099	207 204 0700	to	0799
037 909 5490	to	5499	077 999 4001	to	4090	164 359 2406	to	2499	207 204 0800	to	0899
037 931 4660	to	4699	078 174 4475	to	4499	166 101 1433	to	1499	207 514 3857	to	3899
039 145 6521	to	6595	078 219 4931	to	4999	167 555 5201	to	5212	208 556 4707	to	4799
<b>040 024 3901</b>	to	<b>3999</b>	078 250 4756	to	4799	167 555 5214	to	5299	<b>210 057 4038</b>	to	<b>4047</b>
040 674 7100	to	7199	078 823 8312	to	8399	169 618 6274	to	6299	210 221 0548	to	0599
040 688 8816	to	8899	079 374 0300	to	2499	<b>171 806 6878</b>	to	<b>6893</b>	214 061 4711	to	4724
041 299 6752	to	6799	079 807 2342	to	2399	173 639 4685	to	4699	214 303 6311	to	6325
041 623 8889	to	8899	<b>082 721 0228</b>	to	<b>0254</b>	174 238 2779	to	2799	214 303 6239	to	6258
041 803 6565	to	6599	083 140 5000	to	7499	174 281 9347	to	9399	214 877 4251	to	4273
043 129 1968	to	1997	083 784 8886	to	8899	175 251 2600	to	0699	215 252 3918	to	3992
043 205 5922	to	5999	083 913 6915	to	6999	176 281 7937	to	7950	<b>217 585 1400</b>	to	<b>1499</b>

218 698 2157	to	2199	254 252 2900	to	2999	258 405 7300	to	7399	262 337 5200	to	5299
218 746 0800	to	0899	254 252 3000	to	3099	258 405 7400	to	7499	262 337 5300	to	5399
219 095 0100	to	0399	254 252 3100	to	3199	258 405 7800	to	7899	262 337 5400	to	5499
219 389 1885	to	1899	254 252 3200	to	3299	258 405 7900	to	7999	262 337 5500	to	5599
219 568 7435	to	7456	254 252 3300	to	3399	258 405 8000	to	8099	262 337 5600	to	5699
219 568 7469	to	7487	254 252 3400	to	3499	258 405 8100	to	8199	262 337 5700	to	5799
<b>221 316 5757</b>	<b>to</b>	<b>5799</b>	254 252 3500	to	3599	258 405 8200	to	8299	262 337 5800	to	5899
223 476 3914	to	3999	254 252 3600	to	3699	258 405 8300	to	8399	262 337 5900	to	5999
223 565 4921	to	4957	254 252 3700	to	3799	258 405 8400	to	8499	262 337 6000	to	6099
223 565 4979	to	4999	254 252 3800	to	3899	258 405 8500	to	8599	262 337 6100	to	6199
224 636 4745	to	4765	254 252 3900	to	3999	258 405 8600	to	8699	262 337 6200	to	6299
224 636 4776	to	4799	254 252 4000	to	4099	258 405 8700	to	8799	262 337 6300	to	6399
224 636 4855	to	4885	254 252 4100	to	4199	258 405 8800	to	8899	262 337 6400	to	6499
224 636 4932	to	4948	254 252 4200	to	4299	258 405 8900	to	8999	262 337 6500	to	6599
224 636 4950	to	4962	254 252 4300	to	4399	258 405 9600	to	9699	262 337 6600	to	6699
224 636 4985	to	4999	254 252 4400	to	4499	258 405 9700	to	9799	262 337 6700	to	6799
224 723 0757	to	0799	254 252 4500	to	4599	258 405 9800	to	9899	262 337 6800	to	6899
224 730 2207	to	2299	254 252 4600	to	4699	258 405 9900	to	9999	262 337 6900	to	6999
225 970 0500	to	0599	254 252 4700	to	4799	259 014 9989	to	9999	262 337 7000	to	7099
225 970 0600	to	0699	254 252 4800	to	4899	259 062 4788	to	4798	262 337 7100	to	7199
225 970 0700	to	0799	254 252 4900	to	4999	259 218 1400	to	1499	262 337 7200	to	7299
227 033 8679	to	8699	254 565 7607	to	7700	259 218 1500	to	1599	262 337 7300	to	7399
227 275 9400	to	9999	254 907 1203	to	1299	259 218 1600	to	1699	262 337 7400	to	7499
228 463 2456	to	2499	255 185 9527	to	9599	259 590 5654	to	5699	262 337 7500	to	7599
228 510 4852	to	4899	255 397 1557	to	1576	259 670 8268	to	8299	262 337 7600	to	7699
229 462 8451	to	8475	255 425 2989	to	2998	259 835 6238	to	6399	262 337 7700	to	7799
229 668 5977	to	5999	255 728 6412	to	6499	259 835 6701	to	6799	262 337 7800	to	7899
229 923 9176	to	9199	255 728 9842	to	9899	<b>260 224 4600</b>	<b>to</b>	<b>4699</b>	262 337 7900	to	7999
229 924 6696	to	6699	256 134 9833	to	9839	260 224 5941	to	5999	262 337 8000	to	8099
<b>230 051 9500</b>	<b>to</b>	<b>9999</b>	256 134 9840	to	9849	260 310 2821	to	2899	262 337 8100	to	8199
236 366 2431	to	2499	256 134 9850	to	9859	260 452 0010	to	0022	262 337 8200	to	8299
236 607 6882	to	6899	256 134 9860	to	9869	260 452 0049	to	4299	262 337 8300	to	8399
236 660 5853	to	5872	256 134 9870	to	9879	260 553 8200	to	8299	262 337 8400	to	8499
239 322 5200	to	5299	256 134 9880	to	9889	260 553 8600	to	8699	262 337 8500	to	8599
239 322 5400	to	5499	256 134 9890	to	9899	260 553 9600	to	9799	262 337 8600	to	8699
239 322 5600	to	5699	256 247 6900	to	6999	260 553 9800	to	9899	262 337 8700	to	8799
239 322 5800	to	5899	256 550 5536	to	5545	260 553 9900	to	9999	262 337 8800	to	8899
239 322 5900	to	5999	256 799 2257	to	2299	260 761 1603	to	1662	262 337 8900	to	8999
239 607 4783	to	4799	257 154 8763	to	8799	261 183 2100	to	2299	262 337 9000	to	9099
<b>240 593 1879</b>	<b>to</b>	<b>1899</b>	257 154 8800	to	8899	261 426 0408	to	0499	262 337 9100	to	9199
242 591 2048	to	2099	257 765 4567	to	4599	262 082 8000	to	8099	262 337 9200	to	9299
242 735 0388	to	0398	257 765 4610	to	4696	262 082 8100	to	8199	262 337 9300	to	9399
242 951 7276	to	7299	257 765 4737	to	4799	262 082 8200	to	8299	262 337 9400	to	9499
243 535 6370	to	6399	257 792 7800	to	7889	262 082 8300	to	8399	262 337 9500	to	9599
244 004 9985	to	9999	257 792 7900	to	7999	262 082 8400	to	8499	262 337 9600	to	9699
244 004 9985	to	9999	257 792 8000	to	8099	262 288 7302	to	7399	262 337 9700	to	9799
244 268 9765	to	9799	257 856 9863	to	9899	262 288 7400	to	7499	262 337 9800	to	9899
244 347 4471	to	4499	258 103 1773	to	1782	262 288 9900	to	9999	262 337 9900	to	9999
249 056 1551	to	1599	258 405 1800	to	1899	262 337 2600	to	2699	262 472 3188	to	3199
249 336 9438	to	9499	258 405 1900	to	1999	262 337 2700	to	2700	262 472 3200	to	3299
249 399 4000	to	4099	258 405 3300	to	3399	262 337 2800	to	2800	262 546 3100	to	3199
249 399 4100	to	4199	258 405 3400	to	3499	262 337 2900	to	2900	262 546 3200	to	3299
249 399 4200	to	4299	258 405 3500	to	3599	262 337 3000	to	3099	262 546 3300	to	3399
249 399 4300	to	4399	258 405 3700	to	3799	262 337 3100	to	3199	262 546 3400	to	3499
249 399 4400	to	4499	258 405 3800	to	3899	262 337 3200	to	3299	262 546 3500	to	3599
249 399 4500	to	4599	258 405 3900	to	3999	262 337 3300	to	3399	262 546 3600	to	3699
249 399 4600	to	4699	258 405 4000	to	4099	262 337 3400	to	3499	262 546 3900	to	3999
249 399 4700	to	4799	258 405 4100	to	4199	262 337 3500	to	3599	262 546 4300	to	4399
249 399 4800	to	4899	258 405 4200	to	4299	262 337 3600	to	3699	262 546 4400	to	4499
249 399 4900	to	4999	258 405 4600	to	4699	262 337 3700	to	3799	262 546 4500	to	4599
<b>250 159 7502</b>	<b>to</b>	<b>7599</b>	258 405 5600	to	5699	262 337 3800	to	3899	262 546 4600	to	4699
250 566 9644	to	9699	258 405 5700	to	5799	262 337 3900	to	3999	262 546 4700	to	4799
250 661 8425	to	8499	258 405 5800	to	5899	262 337 4000	to	4099	262 546 4800	to	4899
251 335 5731	to	5799	258 405 5900	to	5999	262 337 4100	to	4199	262 546 4900	to	4999
251 379 2380	to	2399	258 405 6000	to	6099	262 337 4200	to	4299	262 546 7100	to	7199
252 005 7626	to	7699	258 405 6100	to	6199	262 337 4300	to	4399	262 546 7200	to	7299
252 421 8401	to	8499	258 405 6200	to	6299	262 337 4400	to	4499	262 546 7300	to	7399
252 464 2810	to	2899	258 405 6300	to	6399	262 337 4500	to	4599	262 546 7400	to	7499
252 612 3683	to	3699	258 405 6400	to	6499	262 337 4600	to	4699	262 546 9800	to	9899
252 469 2125	to	2199	258 405 6800	to	6899	262 337 4700	to	4799	262 546 9900	to	9999
252 833 3286	to	3297	258 405 6900	to	6999	262 337 4800	to	4899	262 567 1788	to	1799
253 470 3948	to	3999	258 405 7000	to	7099	262 337 4900	to	4999	263 254 2500	to	2500
253 565 7400	to	7499	258 405 7100	to	7199	262 337 5000	to	5099	263 340 0000	to	0099
254 252 2800	to	2899	258 405 7200	to	7299	262 337 5100	to	5199	263 340 0100	to	0199

263 340 0500	to	0599	392 854 8500	to	8899	414 965 1727	to	1799	443 127 3648	to	3699
263 340 0600	to	0699	393 584 7566	to	7699	417 302 8104	to	8199	443 127 4000	to	4099
263 340 2700	to	2799	393 650 0074	to	0099	417 387 6532	to	6599	443 673 7900	to	7999
263 340 2800	to	2899	393 838 8316	to	8499	417 496 6800	to	6999	443 800 9335	to	9399
263 340 3000	to	3099	393 893 6007	to	6099	417 871 9250	to	9299	444 382 8822	to	8899
264 341 2360	to	2399	394 126 6907	to	6999	417 930 9533	to	9599	444 390 1667	to	1699
264 380 4000	to	4099	394 189 0405	to	0599	418 164 6500	to	6799	444 457 3854	to	3899
264 380 4100	to	4199	394 822 3243	to	3278	418 423 9863	to	9899	<b>450 048 4173</b>	<b>to</b>	<b>4199</b>
264 799 6049	to	6099	394 990 1810	to	1899	418 633 5922	to	5999	450 048 4442	to	4699
264 860 7832	to	7868	395 343 3264	to	3299	418 719 8520	to	8599	450 560 5173	to	5199
265 127 3658	to	3699	395 373 3035	to	3099	418 744 2235	to	2299	450 620 3077	to	3099
265 380 7111	to	7137	395 396 9649	to	9799	418 962 2848	to	2899	450 620 3135	to	3199
265 444 4762	to	4799	395 970 3240	to	3299	419 543 0286	to	0299	450 780 2716	to	2799
265 548 7074	to	7099	397 622 4054	to	4099	419 730 0300	to	0399	450 801 2700	to	2799
266 106 0000	to	2499	397 819 8902	to	8999	<b>420 277 0015</b>	<b>to</b>	<b>0049</b>	451 109 2967	to	2984
266 129 5809	to	5899	398 149 7200	to	7699	420 599 0734	to	0798	451 115 4110	to	4125
266 673 0000	to	2499	399 070 0872	to	0899	420 661 4115	to	4199	451 115 4127	to	4199
266 749 7900	to	7999	399 156 7119	to	7199	420 758 9500	to	9699	451 746 0700	to	0799
266 868 0952	to	0999	399 203 5064	to	5099	420 969 3951	to	3971	452 265 0074	to	0099
266 868 1028	to	1099	399 296 9910	to	9999	420 969 3973	to	3999	452 265 0246	to	0299
266 868 1100	to	1199	399 396 8935	to	8999	421 116 3565	to	3599	452 265 0335	to	0399
266 868 1200	to	1299	399 792 7775	to	7799	421 130 9300	to	9399	452 509 1169	to	1199
267 296 1237	to	1299	399 792 8300	to	8399	421 313 4500	to	4999	452 855 6471	to	6499
267 324 8946	to	8998	<b>400 427 1051</b>	<b>to</b>	<b>1999</b>	421 364 5537	to	5599	452 890 4679	to	4799
268 072 1203	to	1299	401 045 1505	to	1549	421 656 2609	to	2699	452 900 8215	to	8238
273 775 7700	to	7899	401 045 1571	to	1599	421 988 9700	to	9799	453 117 9146	to	9199
<b>302 000 0000</b>	<b>to</b>	<b>9999</b>	401 294 2700	to	2799	422 172 4667	to	4699	453 334 3631	to	3699
<b>349 746 2056</b>	<b>to</b>	<b>2099</b>	401 310 9505	to	9599	422 484 4212	to	4299	453 603 7841	to	7891
<b>350 518 7350</b>	<b>to</b>	<b>7374</b>	401 382 5312	to	5399	422 556 1270	to	1299	453 650 1140	to	1199
<b>360 011 1690</b>	<b>to</b>	<b>1699</b>	402 578 7876	to	7899	422 587 7024	to	7099	453 741 1300	to	1399
360 168 6008	to	6099	403 125 6744	to	6799	422 819 7533	to	7599	454 013 2919	to	2999
360 173 8800	to	8899	403 260 7000	to	7499	422 842 5073	to	5087	454 186 2411	to	2499
360 324 2326	to	2399	403 280 6470	to	6499	422 907 7563	to	7599	454 268 4883	to	4899
362 861 3064	to	3099	403 685 8600	to	8699	424 500 6050	to	6099	454 302 5400	to	5499
<b>373 006 2176</b>	<b>to</b>	<b>2199</b>	404 003 0300	to	0399	424 641 8500	to	8599	454 490 8300	to	8399
374 768 2600	to	2699	404 041 8838	to	8899	424 871 6600	to	6699	454 547 7434	to	7499
375 169 4400	to	4599	404 071 4268	to	4299	425 298 2352	to	2399	454 922 4867	to	4895
375 829 3400	to	3499	404 347 5356	to	5399	425 418 4269	to	4299	455 221 1348	to	1499
375 851 9100	to	9199	404 347 5548	to	5599	425 418 4405	to	4499	455 364 2147	to	2199
376 196 0911	to	0999	404 726 4500	to	4599	426 547 4566	to	4599	455 399 5400	to	5499
378 085 3679	to	3699	404 961 5001	to	5199	427 412 6337	to	6499	455 476 0676	to	0699
378 351 1063	to	1099	405 325 0188	to	0198	427 481 0900	to	0999	455 543 0618	to	0699
379 843 5100	to	5199	406 009 4587	to	4599	428 027 2742	to	2752	456 410 9006	to	9099
<b>380 093 9600</b>	<b>to</b>	<b>9699</b>	406 260 6830	to	6899	429 474 4172	to	4199	456 470 4146	to	4299
380 165 1165	to	1199	406 459 6641	to	6999	429 889 2900	to	2999	456 619 4460	to	4499
381 325 4500	to	4599	406 733 3000	to	3999	<b>430 150 4401</b>	<b>to</b>	<b>4599</b>	457 333 2686	to	2699
381 604 2510	to	2699	407 545 1557	to	1599	430 172 8800	to	9899	457 729 1767	to	1777
381 645 9525	to	9599	407 594 0412	to	0599	430 177 1900	to	2099	457 937 8615	to	8699
383 314 3968	to	3999	407 692 9100	to	9299	430 444 9500	to	9699	458 028 9810	to	9899
383 892 1000	to	1344	407 959 2190	to	2199	430 664 4070	to	4099	458 057 2712	to	2999
383 892 1382	to	1399	408 265 2275	to	2288	432 168 8419	to	8499	458 069 9537	to	9599
384 925 3641	to	3654	408 499 7700	to	7799	432 708 6800	to	6999	458 069 9665	to	9699
385 568 2331	to	2399	408 499 7900	to	7999	432 744 1544	to	1599	458 337 5222	to	5299
385 599 7554	to	7575	408 682 8484	to	8599	432 995 9775	to	9799	458 354 7653	to	7999
385 774 2024	to	2099	408 698 7015	to	7099	433 003 5800	to	5899	458 671 8678	to	8699
386 624 1412	to	1599	409 072 3941	to	3999	433 757 3047	to	3099	458 671 8721	to	8798
386 883 8936	to	8999	<b>410 491 2311</b>	<b>to</b>	<b>2399</b>	433 765 4003	to	4099	458 847 5044	to	5999
387 314 5574	to	5599	410 694 8400	to	8599	434 482 7060	to	7199	459 274 7624	to	7699
387 837 6300	to	6399	410 775 1500	to	1599	434 513 2386	to	2399	459 365 5432	to	5499
388 828 0656	to	0699	410 795 7927	to	7999	434 968 3076	to	3092	459 378 5764	to	5799
389 696 2400	to	2799	410 867 0917	to	0966	435 303 1831	to	1842	459 472 4816	to	4999
389 846 3104	to	3135	410 867 0970	to	0999	435 303 1986	to	1999	<b>460 349 6878</b>	<b>to</b>	<b>6899</b>
389 846 3145	to	3195	411 868 1023	to	1199	435 666 6092	to	6399	460 550 1909	to	1999
389 887 9211	to	9230	411 922 2322	to	2399	436 082 6400	to	6899	460 997 5234	to	5299
389 887 9234	to	9299	412 193 0900	to	0999	436 160 6441	to	6499	461 973 6443	to	6499
<b>390 001 3182</b>	<b>to</b>	<b>3199</b>	412 395 8599	to	8699	437 316 7115	to	7199	462 152 0107	to	0299
390 001 3500	to	3699	412 485 6500	to	6599	437 427 0500	to	3499	462 274 1072	to	1099
390 545 5974	to	5999	412 485 6610	to	6699	439 179 2300	to	2399	462 277 8373	to	8399
391 104 6146	to	6199	412 885 5953	to	5999	439 310 0458	to	0499	462 554 6051	to	6099
391 574 1466	to	1499	414 193 3608	to	3674	<b>440 698 1947</b>	<b>to</b>	<b>1999</b>	463 011 5529	to	5540
391 783 3020	to	3599	414 193 3677	to	3699	440 858 6300	to	6399	463 176 4115	to	4199
391 792 6100	to	6199	414 411 7348	to	7399	440 858 6420	to	7299	463 176 4229	to	4299
392 668 2956	to	2999	414 640 0757	to	0799	441 199 1655	to	1699	463 185 2600	to	2799

463 227 7711	to	7799	483 632 2600	to	2799	506 165 7027	to	0099	611 879 6939	to	6999
463 414 4869	to	4899	483 849 1615	to	1699	506 502 5209	to	5299	612 291 8013	to	8099
463 808 3484	to	3499	484 174 4803	to	5299	506 756 1682	to	1699	612 751 5171	to	5199
463 945 7400	to	7899	484 323 8900	to	9199	506 756 1700	to	1799	612 751 5226	to	5299
464 629 9000	to	9399	484 680 5000	to	5038	506 756 1800	to	1899	612 751 6083	to	6099
464 711 4332	to	4399	484 680 5040	to	5074	506 836 5326	to	5399	612 751 6268	to	6299
465 692 3963	to	3999	484 680 5077	to	5099	508 488 6226	to	6299	612 751 6572	to	6599
465 698 8300	to	8599	485 029 4913	to	4999	508 789 8332	to	8399	612 774 2111	to	2199
465 743 7745	to	7799	486 176 0600	to	0699	508 789 8400	to	8499	612 774 2254	to	2299
466 798 6056	to	6067	486 559 7555	to	7599	509 909 0425	to	0435	612 774 2500	to	2599
467 147 4300	to	4399	486 696 3023	to	3199	<b>510 150 2400 to 2499</b>			614 469 0979	to	0999
468 079 5782	to	5799	488 173 7900	to	7999	510 381 3200	to	3299	614 474 3000	to	3099
469 067 2817	to	2899	488 206 4100	to	4199	510 587 9500	to	9599	614 521 3490	to	3499
469 127 8000	to	8199	488 226 0200	to	0299	510 587 9659	to	9699	614 645 1800	to	1899
469 213 0359	to	0399	488 709 3906	to	3999	510 269 9770	to	9999	614 832 1100	to	2099
469 213 0500	to	0599	488 855 8359	to	8399	511 021 5042	to	5099	615 017 7505	to	7599
469 561 8011	to	8099	489 181 8963	to	8999	511 021 5100	to	5199	617 711 6609	to	6699
469 658 1961	to	1999	489 223 2000	to	2099	511 468 1747	to	1799	617 760 5266	to	5299
469 666 9900	to	9999	489 311 1930	to	1999	511 844 0100	to	0199	617 813 3601	to	3699
469 678 1900	to	1999	489 318 6200	to	6300	511 844 0340	to	0399	618 840 9200	to	9299
469 781 4900	to	4999	489 384 0027	to	0099	512 805 3913	to	3919	619 551 7229	to	7299
469 947 6960	to	6999	489 427 0658	to	0899	513 046 0700	to	0726	619 859 3000	to	3099
<b>470 755 5800 to 5818</b>			489 997 5252	to	5299	513 149 0600	to	0699	<b>620 073 9400 to 9499</b>		
471 918 0300	to	0999	<b>490 669 5850 to 6099</b>			513 445 3000	to	3199	621 614 7907	to	7930
471 985 2408	to	2419	490 717 7080	to	7099	513 466 2034	to	2044	621 614 7932	to	7999
472 191 6700	to	6799	490 721 6000	to	6099	513 539 9052	to	9099	621 648 8021	to	8199
472 270 2555	to	2599	490 793 1500	to	2099	513 539 9267	to	9299	621 648 8500	to	8599
472 987 0213	to	0241	490 886 8171	to	8199	513 539 9800	to	9899	621 904 8351	to	8599
472 987 0290	to	0299	490 977 9221	to	9240	513 539 9985	to	9999	621 916 1978	to	1989
473 151 2069	to	2199	491 258 8100	to	9099	513 606 5459	to	5490	622 989 8032	to	8099
473 666 9138	to	9199	491 567 1376	to	1399	513 812 1751	to	1799	623 076 9300	to	9399
473 952 3429	to	3499	492 254 4800	to	4899	514 103 3600	to	3699	623 819 5006	to	5099
474 108 5402	to	5499	492 283 5100	to	5199	514 103 3700	to	3799	623 895 8200	to	8399
474 356 5193	to	5299	492 610 6813	to	6899	514 103 3800	to	3899	623 917 0000	to	0099
474 949 3366	to	3399	493 394 5568	to	5599	<b>600 645 3223 to 3299</b>			623 917 0200	to	0299
475 134 9362	to	9399	493 470 2562	to	2599	601 339 1200	to	1399	624 468 5288	to	5299
475 167 9667	to	9699	493 473 7700	to	7799	601 653 5884	to	5899	624 665 3162	to	3198
475 319 3415	to	3499	493 716 2153	to	2199	601 661 7700	to	7799	625 088 6735	to	6799
475 319 3649	to	3799	494 206 2972	to	2999	601 682 5343	to	5399	625 916 9500	to	9799
475 340 6400	to	6599	494 217 3446	to	3999	601 928 1600	to	1699	625 968 8956	to	8999
475 424 8410	to	8499	494 224 0500	to	0599	602 512 2972	to	2999	627 005 3938	to	3999
475 629 9156	to	9199	495 145 0600	to	0699	602 555 2400	to	2799	627 384 3907	to	4099
475 850 6101	to	6199	496 209 7425	to	7499	602 829 7061	to	7099	627 496 7549	to	7599
475 875 2500	to	2599	496 213 8728	to	8799	603 483 9572	to	9599	627 708 3605	to	3699
476 169 8264	to	8299	496 474 5226	to	5248	603 490 7200	to	7299	627 776 2500	to	2599
476 189 3000	to	3499	497 053 8517	to	8699	603 678 7100	to	7199	628 226 3100	to	3199
476 331 2480	to	2499	497 854 8673	to	8699	603 678 7662	to	7699	628 814 4702	to	4799
477 289 8601	to	8699	498 449 8888	to	8899	603 678 7902	to	7999	628 851 9689	to	9699
477 681 5206	to	5299	498 929 8285	to	8499	603 678 8418	to	8499	629 510 7200	to	7299
478 010 4243	to	4268	498 936 5310	to	5399	603 678 8700	to	9999	629 964 4200	to	4294
478 010 4270	to	4291	499 016 5425	to	5499	604 086 0880	to	0899	<b>630 389 3056 to 3071</b>		
478 450 5071	to	5099	499 440 8575	to	8899	604 349 1414	to	1499	630 463 0588	to	0599
478 469 7838	to	7858	499 731 6717	to	6799	604 503 7776	to	7799	631 459 9117	to	9199
478 469 7883	to	7899	<b>500 064 1858 to 1869</b>			605 520 9037	to	9099	631 762 9325	to	9399
479 280 9800	to	9899	500 070 5725	to	7799	605 685 4010	to	4099	632 217 4933	to	4999
479 365 9116	to	9176	501 058 0016	to	0026	605 988 6467	to	6499	632 500 0000	to	640 3999
479 412 9900	to	9999	501 331 0300	to	0399	607 689 7951	to	7960	633 110 4165	to	4199
479 667 6190	to	6199	501 460 0977	to	0999	607 728 1276	to	1299	633 110 4303	to	4499
479 748 9680	to	9699	502 227 7645	to	7699	608 727 7100	to	7199	633 438 6429	to	6599
479 860 7000	to	7199	502 424 0200	to	0499	608 727 7273	to	7599	633 588 7173	to	7182
<b>480 526 2000 to 2099</b>			502 424 0600	to	0699	608 813 9950	to	9999	634 725 0700	to	0799
480 640 6330	to	6399	502 496 6923	to	6999	609 067 5325	to	5399	634 803 3239	to	3299
480 658 0568	to	0599	503 003 2700	to	2899	609 067 5488	to	5499	634 807 2474	to	2499
480 689 5100	to	5199	503 194 5144	to	5153	609 067 5600	to	5699	634 827 5900	to	5999
481 072 9463	to	9499	503 790 9922	to	9948	609 289 6123	to	6199	634 886 3428	to	3499
481 673 0074	to	0095	504 045 4030	to	4099	609 438 4400	to	4499	635 559 3449	to	3499
482 527 1500	to	1599	504 166 0200	to	0599	609 493 1100	to	1199	636 289 6214	to	6299
482 541 5255	to	5299	504 240 1062	to	1399	609 766 8091	to	8999	636 634 8007	to	8042
482 729 6800	to	6899	504 805 3300	to	3499	609 825 4100	to	4115	637 150 1200	to	1299
483 363 7207	to	7299	505 096 0662	to	0699	609 884 2981	to	2999	637 562 5828	to	5899
483 402 2356	to	2399	505 893 7739	to	7799	609 893 1000	to	1099	638 042 1647	to	1699
483 486 5100	to	5199	505 893 7800	to	7999	<b>610 092 3200 to 3299</b>			638 049 4984	to	4999
483 632 1521	to	1599	506 124 0800	to	0999	610 582 4200	to	4299	638 318 1115	to	1199



638 318 1453	to	1499	654 404 3065	to	3092	685 297 7645	to	7699	702 519 0513	to	0524
638 885 0000	to	0299	654 962 2900	to	3199	685 623 5264	to	5299	702 713 1800	to	1809
638 903 4362	to	4373	655 103 5081	to	5199	685 650 9487	to	9499	702 821 5730	to	5799
639 415 1929	to	1999	655 523 2600	to	2999	685 669 4200	to	4299	702 821 5805	to	5899
639 415 2019	to	2099	656 305 2448	to	2499	685 757 8452	to	8499	702 844 6975	to	6994
639 420 6200	to	6299	657 347 4438	to	4999	686 071 2694	to	2799	702 846 6331	to	6399
639 469 3517	to	3799	657 710 8100	to	8999	686 176 3333	to	3354	702 848 3900	to	3999
639 605 2143	to	2199	657 780 0985	to	0999	686 372 3200	to	3299	702 857 7302	to	7499
639 657 8600	to	8799	658 586 1400	to	1499	686 644 5879	to	5899	702 878 0114	to	0199
<b>640 289 7500 to 7599</b>			658 877 8000	to	8199	686 899 1371	to	1399	703 364 1707	to	1799
640 289 7700	to	7999	658 880 8000	to	8199	686 931 7636	to	7699	<b>740 002 7710 to 7719</b>		
641 170 4420	to	4499	659 398 7300	to	7399	687 601 0973	to	0999	740 037 6730	to	6800
641 318 3133	to	3199	659 706 8113	to	8199	687 614 6774	to	6799	740 119 2275	to	2284
641 378 6500	to	6999	659 846 7837	to	7899	688 120 9000	to	9999	740 130 6688	to	6698
641 383 8739	to	8799	<b>660 510 4100 to 4199</b>			688 314 3107	to	3191	740 144 2780	to	2795
641 877 3187	to	3299	660 673 0400	to	0599	<b>690 291 1361 to 1371</b>			740 241 9049	to	9099
641 877 3310	to	3399	661 488 5000	to	5099	690 788 2877	to	2899	740 252 9265	to	9294
642 355 8094	to	8199	661 609 9100	to	9199	690 893 5344	to	5399	740 255 1718	to	1799
642 355 8308	to	8999	661 716 9420	to	9499	690 893 5512	to	5599	740 274 2602	to	2619
642 900 0018	to	0099	661 906 6522	to	6599	690 904 1300	to	1599	740 277 0366	to	0392
643 030 6254	to	6299	662 021 8332	to	8399	690 941 6000	to	6199	740 332 7658	to	7671
644 066 0882	to	0899	662 068 0700	to	0899	691 313 6383	to	6399	740 348 6641	to	6658
644 069 0600	to	0699	662 553 0774	to	0799	691 313 6600	to	6699	740 351 4790	to	4799
644 077 7506	to	7699	663 078 7034	to	7099	691 582 8003	to	8099	740 374 7416	to	7499
644 085 8157	to	8199	663 763 5300	to	5399	691 664 1800	to	1999	740 470 2420	to	2443
644 112 9839	to	9899	663 883 7039	to	7499	691 664 2400	to	2499	740 514 0300	to	0499
644 373 9083	to	9099	663 938 9200	to	9299	692 727 9362	to	9399	740 523 7432	to	7449
644 380 1460	to	1499	664 253 8000	to	8499	692 798 1800	to	1899	740 535 1555	to	1580
644 733 4715	to	4799	664 656 3055	to	3099	693 249 0779	to	0799	740 557 3570	to	3579
644 900 9712	to	9799	665 174 6400	to	6499	693 249 0877	to	1699	740 650 4104	to	4140
644 901 0109	to	1299	665 274 8208	to	8299	693 445 0566	to	0999	740 684 0620	to	0800
644 901 1325	to	1399	665 669 5400	to	5499	693 448 8500	to	8999	740 701 6105	to	6114
644 923 6800	to	7799	666 132 8226	to	8299	693 645 9583	to	9599	740 705 9790	to	9799
644 932 4655	to	4699	666 696 2209	to	2299	693 965 4200	to	4299	740 726 6400	to	6500
645 318 7240	to	7499	666 696 2309	to	2399	695 741 2906	to	2999	740 748 8319	to	8329
645 333 1766	to	1799	667 032 9300	to	9399	695 947 8518	to	8599	740 765 3306	to	3399
645 790 8632	to	8699	667 729 5529	to	5599	696 662 8247	to	8299	740 774 8434	to	8499
645 821 0657	to	0699	668 383 8400	to	8699	697 447 8285	to	8296	740 779 4259	to	4299
645 930 7948	to	7999	<b>670 368 3400 to 3499</b>			698 042 4816	to	4899	740 786 1885	to	1899
645 975 0737	to	0762	670 369 7336	to	7399	698 131 2138	to	2157	740 790 5989	to	5999
646 242 6200	to	6299	670 750 7169	to	7199	698 227 0000	to	0099	740 803 4870	to	4879
646 270 7639	to	7799	671 046 6200	to	6399	<b>700 065 2570 to 2599</b>			740 820 4854	to	7836
646 798 4000	to	4999	671 251 5448	to	5499	700 065 4800	to	4899	740 827 5758	to	7594
647 048 7035	to	7099	671 926 5600	to	5799	700 190 3350	to	3359	740 917 7490	to	7499
647 049 2900	to	2999	672 444 2000	to	2999	700 228 6048	to	6099	740 918 5531	to	5549
647 398 8300	to	8399	672 828 3410	to	3499	700 650 0452	to	0499	741 037 8528	to	8551
647 398 8481	to	8499	673 167 5776	to	5799	700 666 1323	to	1349	742 030 6135	to	6149
647 437 3000	to	4999	675 464 3700	to	3799	700 786 9106	to	9142	742 033 2663	to	2674
647 811 2188	to	2199	675 464 4000	to	4199	700 859 0744	to	0758	742 040 3300	to	3309
648 009 6057	to	6099	676 365 5958	to	5999	701 028 6780	to	6899	742 112 8155	to	8199
648 163 5300	to	5499	676 669 1024	to	1099	701 213 3900	to	3999	742 151 5000	to	5014
648 722 5283	to	5299	677 126 6734	to	6799	701 267 2000	to	3999	742 191 4640	to	4649
648 892 3164	to	3199	677 333 9979	to	9999	701 335 7312	to	7399	742 192 5210	to	5224
649 100 3989	to	3999	677 466 1088	to	1099	701 369 2005	to	2050	742 222 9200	to	9210
649 647 0370	to	0399	678 071 4500	to	4799	701 499 2260	to	2299	742 228 9660	to	9669
649 647 0522	to	0599	678 096 7531	to	7599	701 503 2247	to	2299	742 247 6980	to	6989
649 647 5237	to	5399	679 909 2578	to	2599	701 541 2271	to	2299	742 290 0936	to	0950
649 647 9100	to	9299	<b>680 112 9565 to 9599</b>			701 553 6557	to	6599	742 302 7600	to	7699
649 666 7800	to	8299	680 244 0903	to	0999	701 578 7460	to	7469	742 305 3711	to	3799
<b>650 114 7707 to 7719</b>			680 412 6046	to	6099	701 578 7475	to	7499	742 305 3800	to	3899
650 130 3400	to	3599	680 761 6800	to	6899	701 601 3457	to	3499	742 305 3900	to	3999
650 213 0406	to	0499	681 677 0540	to	0699	701 605 5913	to	5999	742 305 4000	to	4099
650 555 1749	to	1799	682 070 1029	to	1099	701 695 3982	to	3999	742 305 4100	to	4199
650 564 1900	to	1999	682 956 6280	to	6299	701 695 4148	to	4199	<b>805 885 8411 to 8499</b>		
650 627 4212	to	4299	682 956 6490	to	6599	701 695 4227	to	4299	806 087 1100	to	1499
650 736 2043	to	2099	682 956 6700	to	6799	701 708 1741	to	1799	806 268 9275	to	9299
650 739 1540	to	1699	682 965 1178	to	1199	701 736 3966	to	3999	806 534 3400	to	3477
651 741 4415	to	4499	682 965 1201	to	1299	701 772 0870	to	0899	807 342 3283	to	3399
651 882 2800	to	2899	683 118 2389	to	2399	701 838 2800	to	2899	808 086 7100	to	7199
652 754 6317	to	6399	683 378 2000	to	2099	701 941 0600	to	0699	808 090 3440	to	3499
653 131 4945	to	4999	683 378 2117	to	2299	702 171 1603	to	1699	808 325 5161	to	5699
653 426 3300	to	3399	683 415 1200	to	1499	702 195 5109	to	5199	808 784 8000	to	8299
653 455 4874	to	4899	683 444 8159	to	8199	702 254 9300	to	9399	<b>830 125 0672 to 0699</b>		
654 238 0000	to	0399	685 154 7780	to	7789	702 264 7569	to	7599	830 602 5800	to	5999

830 610 3700	to	3799	857 111 1352	to	1399	903 370 6934	to	6999	918 951 7231	to	7299
830 983 3500	to	3599	857 279 3450	to	3499	904 600 6523	to	6599	919 519 2786	to	2799
830 983 3635	to	3699	857 843 4000	to	4099	904 892 0378	to	0399	919 536 0770	to	0799
831 354 1387	to	1399	858 124 7644	to	7699	904 892 0648	to	1299	919 814 3095	to	3199
831 815 8240	to	8299	858 756 3111	to	3299	905 056 2216	to	2299	919 889 5110	to	5134
832 525 3810	to	3899	859 063 8200	to	8699	905 510 6647	to	6799	919 889 5137	to	5176
833 159 1884	to	1899	859 190 0600	to	0644	905 510 6900	to	7099	919 889 5178	to	5199
833 456 2567	to	2599	859 437 5538	to	5599	905 794 0000	to	0199	919 889 5030	to	5070
833 566 3015	to	3071	859 811 2888	to	2899	905 794 0288	to	0299	919 889 5090	to	5099
834 130 5200	to	5299	859 855 8873	to	8999	905 873 6900	to	6999	919 915 2774	to	2787
834 316 5444	to	5499	<b>860 240 8520 to 8599</b>			905 873 7100	to	7299	<b>920 155 4662 to 4687</b>		
834 354 8747	to	8766	860 275 3900	to	3999	905 880 8900	to	8999	920 309 9039	to	9199
834 354 8824	to	8838	860 518 9629	to	9699	905 889 7100	to	7199	920 771 5321	to	5399
835 269 5700	to	5799	860 600 0021	to	0999	906 158 1508	to	1599	920 857 5500	to	5899
835 496 7303	to	7399	861 158 2350	to	2599	906 558 8812	to	8899	920 864 3480	to	3499
835 539 5200	to	5999	861 367 5400	to	5499	906 982 2214	to	2299	920 963 4567	to	4599
835 813 3015	to	3099	861 637 6010	to	6099	907 725 8500	to	8599	921 333 7400	to	7499
837 672 8967	to	8999	861 979 7292	to	7499	907 815 0216	to	0257	921 477 3762	to	3799
837 784 3282	to	3299	862 216 6100	to	6199	908 622 4225	to	4235	922 278 1048	to	1399
838 176 8377	to	8399	862 263 9213	to	9299	908 936 9254	to	9299	922 280 2019	to	2099
838 518 1257	to	1299	862 271 0800	to	0999	909 066 4494	to	7499	922 280 2233	to	2299
839 718 8257	to	8299	862 271 5000	to	5099	909 067 7400	to	7499	922 773 0459	to	0499
<b>840 323 0600 to 0699</b>			863 871 5138	to	5199	909 100 1787	to	1799	923 032 7000	to	7399
840 875 6235	to	6299	863 949 5300	to	5399	909 100 1900	to	2099	923 045 3630	to	3699
840 910 0900	to	0999	864 088 8200	to	8299	909 355 0422	to	0499	923 484 3600	to	3699
841 349 5000	to	5099	864 426 3972	to	3999	909 568 8900	to	9099	923 493 9403	to	9599
841 805 7747	to	7899	864 520 6117	to	6136	909 568 9300	to	9499	923 493 9681	to	9699
841 805 7944	to	8099	865 151 0526	to	0599	909 725 7307	to	7399	923 604 4424	to	4499
842 226 0685	to	0695	865 500 4034	to	4099	909 833 0947	to	0999	923 810 7800	to	8299
842 685 4600	to	4699	865 883 6082	to	6099	<b>910 219 8631 to 8699</b>			924 252 1200	to	1299
842 685 4742	to	4999	866 004 3000	to	3999	910 265 1100	to	1199	924 252 1400	to	1499
842 860 0300	to	0399	866 442 4100	to	4899	910 471 7273	to	7299	924 533 0711	to	0799
842 898 5582	to	5599	867 366 9108	to	9118	910 536 2505	to	2599	924 533 2343	to	2399
843 062 7100	to	7199	867 633 7403	to	7499	910 958 7499	to	7599	924 533 2428	to	2499
843 077 6288	to	6299	867 737 5623	to	5699	911 140 1000	to	2199	924 685 1957	to	1999
843 077 6378	to	6399	868 169 4529	to	4599	911 245 2545	to	2599	924 946 6300	to	6699
843 758 5769	to	5778	868 173 8400	to	8599	911 268 9077	to	9099	925 333 5900	to	6099
843 786 2554	to	2699	868 514 9000	to	9099	911 400 8948	to	8999	925 336 2300	to	2399
845 656 8165	to	8199	868 566 9200	to	9299	911 508 1620	to	1799	926 432 5907	to	5999
845 727 2100	to	2199	869 200 0000	to	9999	911 509 9310	to	9399	926 436 3600	to	3699
845 746 2618	to	2635	869 387 1150	to	1199	911 523 3000	to	3999	927 765 6257	to	6299
846 390 7531	to	7599	869 505 3500	to	3599	912 057 9922	to	9999	928 197 8100	to	8199
846 918 0572	to	0599	869 523 7033	to	7099	912 882 0563	to	0899	928 197 8283	to	8299
847 237 7690	to	7699	869 566 6150	to	6167	913 605 2218	to	2299	928 856 2059	to	2068
847 284 2481	to	2499	869 800 0000	to	999 9999	913 709 2429	to	2499	<b>930 078 5800 to 5899</b>		
847 374 7055	to	7065	<b>870 054 4814 to 4899</b>			913 818 3501	to	3999	930 219 1722	to	1799
847 374 7055	to	7065	870 491 4812	to	4849	914 063 4300	to	4399	930 335 7810	to	7819
847 636 5304	to	5399	870 536 5820	to	5829	914 346 7621	to	7644	931 097 9259	to	9299
847 700 5447	to	5499	870 541 7167	to	7239	914 453 1366	to	1399	931 156 1502	to	1579
847 723 7500	to	7599	870 575 8155	to	8999	914 529 6185	to	6299	931 156 1600	to	1625
849 485 3427	to	3499	870 589 0485	to	0494	914 896 4658	to	4699	931 156 1671	to	1699
849 520 9850	to	9899	870 691 7060	to	7099	915 187 8774	to	8779	932 506 6400	to	6599
849 608 1357	to	1399	872 028 4850	to	4899	915 300 2783	to	2799	932 732 1796	to	1799
849 792 2600	to	2699	872 029 9306	to	9399	915 546 6822	to	6999	932 827 9026	to	9099
<b>850 546 1862 to 1899</b>			872 078 3709	to	3799	915 646 5183	to	5199	932 957 2300	to	2399
851 143 6826	to	6844	872 100 0445	to	0459	915 671 3963	to	3980	933 060 6160	to	6189
851 209 9880	to	9899	<b>900 556 4178 to 4199</b>			915 671 3982	to	3999	933 387 2541	to	2561
851 928 9221	to	9299	900 845 0044	to	0099	915 675 2217	to	2299	933 760 3609	to	4199
852 589 6560	to	6599	900 936 0217	to	0299	916 440 3377	to	3399	933 894 0928	to	0999
853 049 3646	to	3699	900 936 0435	to	0499	916 670 6352	to	6399	934 018 2729	to	2741
854 304 4089	to	4999	901 058 5255	to	5280	916 682 5300	to	5399	934 180 0300	to	0399
854 529 2200	to	2299	901 273 1082	to	1099	916 694 1414	to	1499	934 236 3954	to	3999
854 532 0000	to	2999	901 287 5143	to	5199	916 703 0802	to	0821	934 622 8717	to	8999
855 001 6204	to	6249	901 291 2789	to	2799	917 089 0709	to	0799	935 216 0312	to	0399
855 319 9364	to	9399	901 525 7122	to	7199	917 089 0842	to	0899	935 843 2202	to	2247
855 361 3390	to	3399	902 089 1253	to	1299	917 216 2928	to	2999	936 024 8889	to	8899
856 226 0490	to	0499	902 198 9769	to	9799	917 370 6300	to	6499	936 339 4455	to	4499
856 656 5800	to	5999	902 948 1269	to	1299	917 486 4900	to	4999			
856 752 0200	to	0299	902 985 0833	to	0899	918 460 0602	to	0699			

## Missing, Lost, or Stolen Canadian Money Order Forms

### Do Not Cash — Upon Receipt, Notify Local Postal Inspectors

Provide this listing to all Postal Service™ employees responsible for accepting and cashing postal money orders. Destroy all interim notices when the numbers listed appear in the *Postal Bulletin*. The new money order serial

numbers consist of the first 9 digits. The tenth digit is a check digit only.

Do not cash outdated money orders **104 151 601 to 692 600 000**. Advise holders to send invalid money orders to Canada Post Corporation, Ottawa, Canada K1A 0B1. Check for altered dollar amounts by holding money orders to the light.

719 869 731	to	9 760	728 702 338	to	2 400	734 950 111	to	0 170	742 325 668	to	5 700
<b>720 227 871</b>	<b>to</b>	<b>7 930</b>	728 915 371	to	5 850	735 120 331	to	0 840	742 408 771	to	8 830
720 227 949	to	7 960	728 953 141	to	3 410	735 283 008	to	3 020	742 512 120	to	2 150
720 368 543	to	8 570	728 954 280	to	4 310	735 293 131	to	3 220	742 684 849	to	4 890
720 392 151	to	2 570	729 169 081	to	9 140	735 635 010	to	5 040	742 839 553	to	9 630
720 556 491	to	6 640	729 363 841	to	3 870	735 783 961	to	3 990	742 913 668	to	3 700
720 558 621	to	8 650	729 682 891	to	3 190	735 803 401	to	3 430	742 917 287	to	7 296
720 575 361	to	5 570	729 838 940	to	9 070	736 005 420	to	5 440	742 921 891	to	1 980
720 590 152	to	0 179	729 839 101	to	9 130	736 366 021	to	6 110	742 983 631	to	3 810
721 638 331	to	9 170	<b>730 077 683</b>	<b>to</b>	<b>7 840</b>	736 624 456	to	4 500	743 020 021	to	0 170
721 815 391	to	5 420	730 109 847	to	9 880	736 670 851	to	1 060	743 206 491	to	6 500
721 969 713	to	9 740	730 373 761	to	3 850	736 767 061	to	7 090	743 235 992	to	6 050
722 072 137	to	2 160	730 501 951	to	2 130	736 767 093	to	7 120	743 940 631	to	0 900
722 378 265	to	8 280	730 519 379	to	9 470	736 982 191	to	2 370	743 978 011	to	8 070
722 413 990	to	4 004	730 569 278	to	9 360	736 982 551	to	2 730	744 234 751	to	4 780
722 764 948	to	4 980	730 711 711	to	1 740	737 110 141	to	0 170	744 499 591	to	9 680
722 825 840	to	5 889	730 722 991	to	3 230	737 185 501	to	5 710	744 626 901	to	6 910
723 153 841	to	3 850	730 845 970	to	5 990	737 317 321	to	7 350	745 388 794	to	8 910
723 237 616	to	7 630	730 888 291	to	8 320	737 517 781	to	7 840	746 446 806	to	6 820
723 331 081	to	1 110	730 927 591	to	7 680	737 628 181	to	8 210	746 818 351	to	8 410
723 496 443	to	6 470	731 307 914	to	7 930	737 634 258	to	4 270	747 245 266	to	5 280
723 967 291	to	7 320	731 402 431	to	2 460	738 361 971	to	1 980	747 364 813	to	4 830
724 655 196	to	5 340	731 407 232	to	7 320	738 447 601	to	7 660	747 501 434	to	1 450
724 711 441	to	1 500	731 588 301	to	8 340	738 648 355	to	8 450	747 739 891	to	0 070
724 711 538	to	1 560	731 767 273	to	7 320	738 849 811	to	9 900	748 148 649	to	8 760
724 793 221	to	3 250	731 781 061	to	1 120	738 892 270	to	2 290	748 259 960	to	9 970
724 908 109	to	8 120	731 837 821	to	7 910	738 997 259	to	7 380	748 565 162	to	5 280
724 937 461	to	7 670	731 841 377	to	1 450	739 161 451	to	1 540	748 874 988	to	5 030
725 163 118	to	3 151	732 018 481	to	8 600	739 219 381	to	9 440	749 137 381	to	7 410
725 202 735	to	2 750	732 067 972	to	8 370	739 740 151	to	0 180	749 190 192	to	0 210
725 398 591	to	8 800	732 188 649	to	8 670	739 793 491	to	3 520	749 685 421	to	5 450
725 464 591	to	4 920	732 193 460	to	3 470	739 793 527	to	3 550	749 846 791	to	6 850
725 475 321	to	5 330	732 201 241	to	1 390	739 942 621	to	2 650	749 993 131	to	3 580
725 711 057	to	1 070	732 220 431	to	0 440	739 999 231	to	9 320	<b>750 071 587</b>	<b>to</b>	<b>1 610</b>
725 738 581	to	8 730	732 355 201	to	5 380	<b>740 011 517</b>	<b>to</b>	<b>1 530</b>	750 408 167	to	8 183
725 981 311	to	1 430	732 472 320	to	2 560	740 030 701	to	0 970	750 438 421	to	8 501
725 987 835	to	7 880	732 541 605	to	1 620	740 261 740	to	1 820	750 743 911	to	4 030
726 060 811	to	0 900	732 572 221	to	2 490	740 265 811	to	6 290	750 779 118	to	9 400
726 391 970	to	2 520	732 586 479	to	6 710	740 299 111	to	9 170	750 910 981	to	1 010
726 484 771	to	4 800	732 994 037	to	4 080	740 299 231	to	9 260	750 960 841	to	0 900
726 493 351	to	5 300	733 163 449	to	3 460	740 329 266	to	9 320	751 296 211	to	6 240
726 504 031	to	4 063	733 297 171	to	7 290	740 889 081	to	9 090	751 539 121	to	9 180
726 504 070	to	4 090	733 446 631	to	7 110	741 010 421	to	0 530	751 541 311	to	1 790
726 504 331	to	4 390	733 474 665	to	4 770	741 113 041	to	3 370	751 757 641	to	7 700
726 563 701	to	4 060	733 704 482	to	4 570	741 373 891	to	4 340	751 936 951	to	7 010
726 599 371	to	9 460	733 751 041	to	1 130	741 452 369	to	2 490	751 951 861	to	1 890
726 626 356	to	6 370	734 009 101	to	9 130	741 492 991	to	3 140	751 999 021	to	9 110
727 182 271	to	2 510	734 290 759	to	0 770	741 553 460	to	3 470	752 139 516	to	9 570
727 416 181	to	6 240	734 389 273	to	9 290	741 764 431	to	4 520	752 182 892	to	2 950
727 481 431	to	1 460	734 440 031	to	0 111	741 764 431	to	4 520	752 206 861	to	7 100
727 749 241	to	9 780	734 797 201	to	7 320	742 178 834	to	8 880	752 295 241	to	5 600
728 382 331	to	2 480	734 939 611	to	9 640	742 325 500	to	5 520	752 731 351	to	1 410

752 767 441	to	7 470	762 593 431	to	3 460	773 208 991	to	9 290	800 427 530	to	7 540
753 008 941	to	9 030	763 155 160	to	5 180	773 231 311	to	1 340	800 872 741	to	2 830
753 194 311	to	4 370	763 178 631	to	8 660	773 348 739	to	8 940	801 349 801	to	9 830
753 620 378	to	0 400	763 506 001	to	6 060	773 348 739	to	8 940	801 676 681	to	7 100
754 013 917	to	3 940	763 522 141	to	2 470	773 575 891	to	5 950	802 967 821	to	7 940
754 161 061	to	1 120	763 717 694	to	7 800	773 852 971	to	3 030	803 217 601	to	7 780
754 358 445	to	8 610	763 826 461	to	6 520	775 373 449	to	3 460	803 729 731	to	9 850
754 410 451	to	0 660	763 900 460	to	0 471	<b>789 257 191</b>	<b>to</b>	<b>7 250</b>	803 747 402	to	7 520
754 438 393	to	8 410	763 900 479	to	0 530	<b>790 448 020</b>	<b>to</b>	<b>8 460</b>	804 138 181	to	8 420
754 493 109	to	3 130	763 917 271	to	7 750	790 597 485	to	7 530	804 428 224	to	8 250
754 664 182	to	4 220	764 125 801	to	5 860	790 911 883	to	1 900	804 682 411	to	2 710
754 816 377	to	6 470	764 284 525	to	4 560	791 057 441	to	7 550	805 272 525	to	2 540
755 487 421	to	7 600	764 526 241	to	6 330	791 239 081	to	9 290	805 523 445	to	3 460
755 592 901	to	3 140	764 601 421	to	1 600	791 374 483	to	4 500	805 745 704	to	5 730
755 790 020	to	0 030	764 650 231	to	0 470	791 387 971	to	8 030	806 452 907	to	2 980
755 791 730	to	1 800	764 984 371	to	4 850	791 447 521	to	7 850	806 744 781	to	4 850
755 926 951	to	7 070	765 003 667	to	3 680	791 451 151	to	1 240	806 982 181	to	2 300
755 934 332	to	4 510	765 042 517	to	2 540	791 500 009	to	0 470	807 764 791	to	4 910
755 957 701	to	8 000	765 194 728	to	4 970	791 771 431	to	1 490	808 089 931	to	9 960
755 962 981	to	3 280	765 387 365	to	7 450	792 004 293	to	4 320	808 656 423	to	6 450
756 035 371	to	5 490	765 541 801	to	2 100	792 018 379	to	8 420	808 753 771	to	3 800
756 301 257	to	1 290	765 638 461	to	8 970	792 070 621	to	0 740	809 189 001	to	9 010
756 371 565	to	1 580	765 647 101	to	7 190	792 145 211	to	5 230	809 886 879	to	6 930
756 876 031	to	6 120	765 813 781	to	4 029	792 391 381	to	1 620	809 890 489	to	0 500
756 876 151	to	6 240	765 879 314	to	9 390	792 452 779	to	2 790	<b>810 323 734</b>	<b>to</b>	<b>3 760</b>
756 970 129	to	0 140	765 954 001	to	4 030	792 772 728	to	2 770	810 367 116	to	7 140
757 059 613	to	9 630	766 120 286	to	0 320	792 903 511	to	3 990	810 526 351	to	6 500
757 078 540	to	8 560	766 125 716	to	5 750	793 282 518	to	2 533	810 806 911	to	6 940
757 086 209	to	6 240	766 158 824	to	8 840	794 041 831	to	2 040	810 807 211	to	7 240
757 240 591	to	0 650	766 388 433	to	8 460	794 397 709	to	7 780	811 423 021	to	3 110
757 277 371	to	7 700	766 509 421	to	9 660	794 581 741	to	2 040	811 517 221	to	7 239
757 291 591	to	2 730	766 572 901	to	3 020	794 592 122	to	2 150	811 721 101	to	1 130
757 964 251	to	4 280	766 748 500	to	8 521	795 032 251	to	2 340	812 025 721	to	5 900
758 067 001	to	7 090	767 024 341	to	4 370	795 796 291	to	6 350	812 093 073	to	3 130
758 105 221	to	5 250	767 326 471	to	6 590	796 070 139	to	0 160	812 100 821	to	0 840
758 324 941	to	5 000	767 332 561	to	2 950	796 143 151	to	3 630	812 465 251	to	5 610
758 593 628	to	3 650	768 009 841	to	9 960	796 159 725	to	9 740	812 918 341	to	8 670
758 709 038	to	9 060	768 011 489	to	1 520	796 169 306	to	9 340	812 918 701	to	8 760
758 744 101	to	4 160	768 177 980	to	7 990	796 373 406	to	3 430	813 050 491	to	0 520
758 850 883	to	0 900	768 391 081	to	1 170	796 602 961	to	3 050	813 073 171	to	3 200
758 860 951	to	1 550	768 661 569	to	1 650	796 708 441	to	8 500	813 398 476	to	8 550
759 152 851	to	2 880	769 000 051	to	0 080	796 886 281	to	6 430	813 713 971	to	4 000
759 740 941	to	1 090	769 050 841	to	0 900	796 901 701	to	2 000	813 858 121	to	8 150
<b>760 004 596</b>	<b>to</b>	<b>4 610</b>	769 159 081	to	9 178	796 975 466	to	5 590	814 789 330	to	9 349
760 118 191	to	8 250	769 737 496	to	7 510	797 272 917	to	2 950	814 984 656	to	4 680
760 155 001	to	5 090	769 778 491	to	8 730	797 519 441	to	9 460	815 016 020	to	6 030
760 378 002	to	8 020	769 827 331	to	7 450	797 519 731	to	0 240	815 199 410	to	9 420
760 692 722	to	2 749	<b>770 216 071</b>	<b>to</b>	<b>6 100</b>	797 535 181	to	5 330	815 240 491	to	0 520
761 055 460	to	5 480	770 723 281	to	3 400	797 646 151	to	6 180	815 755 591	to	5 620
761 169 781	to	9 810	770 790 451	to	0 480	798 040 053	to	0 080	815 755 622	to	5 650
761 504 941	to	5 120	770 915 150	to	5 490	798 055 813	to	5 830	815 806 381	to	6 680
761 516 836	to	6 910	771 455 551	to	5 610	798 055 891	to	5 950	816 126 834	to	6 870
761 613 588	to	3 600	771 609 661	to	9 690	798 326 371	to	6 520	816 156 721	to	6 780
761 688 631	to	8 690	771 932 551	to	2 580	798 339 167	to	9 210	816 580 903	to	0 920
761 805 199	to	5 240	772 057 224	to	7 440	798 562 411	to	2 440	816 945 571	to	5 600
761 826 106	to	6 120	772 162 660	to	3 070	798 632 461	to	2 490	817 253 011	to	3 280
761 881 171	to	1 560	772 718 615	to	8 640	798 807 151	to	7 510	817 763 881	to	4 060
761 975 641	to	5 670	772 940 140	to	0 160	798 944 761	to	5 030	818 330 562	to	0 610
761 975 886	to	5 895	772 970 886	to	0 940	799 118 616	to	8 640	818 459 641	to	9 670
762 304 144	to	4 170	773 009 419	to	9 430	799 133 191	to	3 220	818 926 273	to	6 320
762 324 931	to	4 960	773 112 031	to	2 060	799 177 626	to	7 650	818 950 351	to	0 380
762 439 261	to	9 290	773 125 387	to	5 410	799 854 751	to	5 200	818 962 492	to	2 530
762 524 158	to	4 220	773 179 320	to	9 410	<b>800 044 320</b>	<b>to</b>	<b>4 410</b>	819 032 341	to	2 730
762 584 872	to	4 970	773 202 989	to	3 140	800 211 901	to	2 440	819 127 054	to	7 080

819 278 540	to 8 670	822 703 442	to 3 470	826 226 644	to 6 670	828 539 341	to 9 370
819 544 681	to 4 740	822 900 991	to 1 020	826 582 951	to 3 430	828 732 331	to 2 390
819 928 441	to 8 650	822 925 951	to 6 100	826 720 201	to 0 230	828 807 781	to 7 840
<b>820 034 406</b>	<b>to 4 430</b>	823 284 931	to 4 990	827 005 671	to 5 830	828 830 952	to 0 963
820 070 761	to 1 540	823 293 031	to 3 210	827 287 861	to 7 950	828 939 781	to 0 050
820 191 342	to 1 360	823 556 011	to 6 100	827 291 502	to 1 520	829 002 721	to 2 870
820 274 856	to 4 880	824 078 341	to 8 370	827 575 381	to 5 470	829 005 301	to 5 540
820 600 171	to 0 230	824 156 325	to 6 340	827 609 085	to 9 100	829 080 241	to 0 330
821 172 241	to 2 360	824 511 252	to 1 270	827 619 811	to 9 840	829 160 986	to 1 000
821 229 661	to 9 720	824 588 281	to 8 370	827 883 511	to 3 600	829 176 841	to 6 930
821 229 743	to 9 780	825 140 397	to 0 460	828 160 441	to 0 530	829 471 561	to 1 590
821 903 731	to 3 910	825 409 651	to 9 680	828 376 201	to 6 260	829 561 065	to 1 080
821 927 841	to 7 850	825 472 171	to 2 200	828 441 602	to 1 630	829 566 481	to 6 510
822 505 801	to 5 830	826 042 898	to 2 920	828 539 316	to 9 340	829 569 931	to 9 960

— Criminal Investigations Group, U.S. Postal Inspection Service, 2-25-21

### Verifying U.S. Postal Service Money Orders

Follow these steps to cash a Postal Service™ money order:

1. Check that the amount does not exceed the legal limit: \$1,000 for domestic, and \$700 for international Postal Service money orders.
2. Check that the proper security features are present:
  - When held to the light, a watermark of Benjamin Franklin is repeated from top to bottom on the left side.
  - When held to the light, a dark line (security thread) runs from top to bottom with the word “USPS” repeated.
  - When there is discoloration around the dollar amounts, this might indicate the amounts were changed.

These appear in Postal Service Notice 299, *U.S. Postal Money Order Reference Card*, or online at [usps.com/shop/money-orders.htm](https://usps.com/shop/money-orders.htm).

3. If the money order seems suspicious, call the U.S. Postal Service Money Order Verification System at 866-459-7822.

Provide this information to local banks and retailers, as they also receive Postal Service money orders for cashing.

— *Delivery and Retail Customer Service Operations, 2-25-21*

### Counterfeit Canadian Money Order Forms

#### Do Not Cash

To be posted and used by retail window employees. As directed, destroy previous notices. Destroy all interim notices when the numbers listed appear in the *Postal Bulletin*.

671,819,086	683,594,542	687,262,503
676,612,640	684,683,610	687,262,525
677,891,039	686,619,878	687,262,526
678,282,493	686,619,886	687,287,578
678,916,031	686,619,887	687,287,581
679,552,215	686,794,382	687,287,582
679,694,334	686,794,426	694,063,898
679,751,983	686,794,427	694,063,899
679,800,207	686,794,431	694,063,980
681,130,536	687,262,502	701,321,725
681,844,376		

— *Criminal Investigations Group, U.S. Postal Inspection Service, 2-25-21*

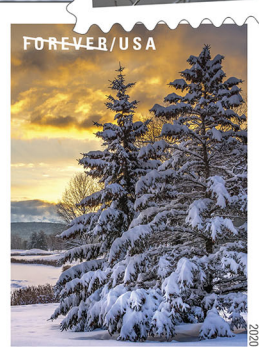
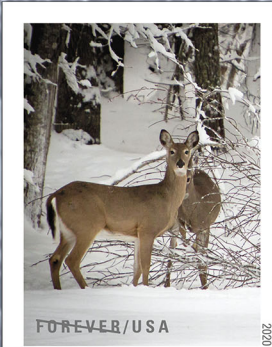
### Toll-Free Number Available to Verify Canadian Money Orders

The Canada Post Corporation has a toll-free number that cashing agents can call to verify the validity of Canadian Postal Money Orders. The number is 800-563-0444.

This toll-free number is printed on the back of the Canadian Postal Money Orders.

— *Criminal Investigations Group, U.S. Postal Inspection Service, 2-25-21*

Enjoy the Serenity of Seasonal Sights  
Amid Snowy Landscapes  
with **Winter  
Scenes**  
Forever® Stamps



On Sale Nationwide: October 16, 2020

## Other Information

### Overseas Military/Diplomatic Mail

Mail addressed to military and diplomatic post offices overseas is subject to certain conditions or restrictions of mailing regarding content, preparation, and handling. The APO/FPO/DPO table outlines these conditions by APO/FPO/DPO ZIP Codes™ through the use of footnoted mailing restrictions codes (see the [Restrictions](#) page following the table).

Acceptance clerks must use the table with the Retail System Software terminal to determine which APO/FPO/DPO ZIP Codes are active and which conditions of mailing apply.

The entries under “Changes” appear in bold in the following APO/FPO/DPO table:

We have eliminated “Not Active” entries from the table below to save space and paper.

### APO/FPO/DPO Table

APO/ FPO/ DPO	See Restrictions	APO/ FPO/ DPO	See Restrictions	APO/ FPO/ DPO	See Restrictions	APO/ FPO/ DPO	See Restrictions
09002	A-B-F-F3-H-N-Q-R-S-V-Z-Z1	09094	B-C-D-F3-H-M-P-R-S-Z1	09175	A-B-C1-C2-E2-F-F1-F3-H1-J-L-M-N-R-R1-S-T-V-W-X-Z1	09285	A-B-C-E-E-1-F1-F3-H-I3-L-M-N-R-S-T-V-X-Z-Z1
09003	B-C-D-E-F3-H-M-P-R-S-U	09095	B-C-D-E-H-M-R-U	09176	A-B-C2-F-F1-F3-J-L-M-N-R-R1-S-T-V-X-Z1	09289	B-E2-F1-F3-H1-J-L-M-N-R-R1-S-T-U2-V-X-Z1
09004	B-C-D-E-F3-H-M-R-S-U	09096	B-C-D-E-F3-H-M-R-S-U	09177	B-C-D-E-F3-H-M-R-S-U	09290	A-B-F1-F3-J-L-M-N-R-S-T-U2-V-X-Z1
09005	B-C-D-E-F3-H-M-P-R-S-U	09103	A-B-F-F3-H-N-Q-R-S-V-Z-Z1	09178	B-C1-C2-E2-F1-F3-I3-L-M-N-R-S-T-V-X-Z-Z1	09291	B-C-C1-C2-E2-F1-F3-H1-L-N-R-R1-S-T-V-X-Z1
09006	B-C-D-E-F3-H-M-R-S-U	09104	B-C-D-F3-H-M-R-S-U-Z1	09180	B-C-D-E-F3-H-M-R-S-U	09292	A-B-C-C2-E-E2-E3-F1-F3-H-H1-J-L-M-N-R-R1-S-T-V-X-Z1
09008	A-B-F-F3-H-N-Q-R-S-V-Z-Z1	09107	B-C-D-E-F3-H-M-R-S-U	09186	B-C-D-E-F3-H-M-P-R-S-U	09301	A-B-C1-C2-E2-F-F1-F3-H1-I3-L-M-N-R-R1-S-T-U4-V-Z-Z1
09009	B-C-D-E-F3-H-M-R-S-U-Z1	09112	B-C-D-E-F3-H-M-R-S-U	09203	A-B-C-C1-C2-F-F1-F3-I3-J-L-M-N-R-R1-T-V-Z-Z1	09302	A-B-C1-F-F1-F3-H-M-N-R-S-V-Z-Z1
09010	B-C-D-E-F3-H-M-R-S-U2	09113	A-B-F-F3-H-N-Q-R-S-V-Z-Z1	09204	B-C-F3-M-N-R-S-V-Z1	09305	A-B-C1-E2-F-F1-F3-H1-I3-M-N-R-R1-S-T-V-Z-Z1
09011	B-C-D-E-F3-H-M-R-S-U	09114	B-C-D-E-F3-H-M-R-S-U	09211	B-C-D-E-F3-H-M-P-R-S-U	09306	A-B-C1-E2-F-F1-F3-H1-R-R1-S-U2-V-Z1
09012	B-C-D-E-F3-H-M-R-S-U-Z1	09115	A-B-F-F3-H-N-Q-R-S-V-Z-Z1	09213	B-C2-F-F1-F3-H-J-L-M-N-R-R1-T-U-V-Z1	09307	B-F3-N-R-R1-S-Z1
09013	B-C-D-E-F-F1-F3-H-M-R-S-U-Z1	09116	A-B-F-F3-H-N-Q-R-S-V-Z-Z1	09214	B-C-D-E-F3-H-M-R-S-U-Z1	09309	A-B-C-C1-C2-E2-F-F1-F3-H1-M-N-R-R1-S-V-Z1
09014	B-C-D-E-F3-H-M-P-R-S-U	09123	B-C-D-E-F3-H-M-R-S-U-Z1	09216	B,C,F1,F3,M,N,R,S,V,Z1	09310	A-B-C1-C2-E2-F-F1-F3-H1-I3-L-M-N-R-R1-S-T-U4-V-Z-Z1
09015	A-B-C-C1-C2-F-F1-F3-J-L-M-N-R-R1-S-V-Z1	09125	A-B-C-F-F1-F3-H-N-R-R1-S-V-V1	09227	B-C-D-E-F3-H-M-R-S-U	09311	A-B-C1-C2-E2-F-F1-F3-H1-I3-L-M-N-R-R1-S-T-U4-V-Z-Z1
09016	B-C-D-E-F1-F3-H-M-R-S-U	09126	B-C-D-F3-H-M-P-R-S-Z1	09240	A-B-C1-F-F3-H-N-R-S-V	09312	A-B-C1-C2-E2-F-F1-F3-H1-I3-L-M-N-R-R1-S-T-U4-V-Z-Z1
09017	A-B-F-F3-H-N-Q-R-S-V-Z-Z1	09128	B-C-D-E-F3-H-M-R-S-U	09241	A-B-F3-N-R-S-U-Z1	09313	A-B-C-C1-E2-F-F1-F2-F3-H1-R-R1-S-V-Z1
09018	A-B-F-F3-H-N-Q-R-S-V-Z-Z1	09131	B-C-D-E-F3-H-M-R-S-U	09242	A-B-C1-F-F3-H-N-R-S-V	09315	A-B-C1-E2-F-F3-N-R-R1-S-V-Z1
09020	B-C-D-E-F3-H-M-R-S-U	09135	A-B-F-F3-H-N-R-S-U-V-Z1	09250	B-C-D-E-F3-H-M-R-S-U	09316	A-B-C1-E2-F-F1-F3-H1-I3-M-N-R-R1-S-T-V-Z-Z1
09021	B-C-D-E-F3-H-M-R-S-U-Z1	09136	B-C-D-E-F1-F3-H-M-P-R-S-U	09261	B-C-D-E-F3-H-M-N-R-S-U-V-Z1	09318	A-B-C1-E2-F-F3-H1-M-N-R-R1-S-V-Z1
09034	B-C-D-E-F3-H-M-R-S-U	09138	B-C-D-F3-H-M-R-S-U	09263	B-C-D-E-F3-H-M-R-S-U	09319	A-B-C-C1-E2-F-F1-F2-F3-H1-R-R1-S-U2-V-Z1
09044	B-C-D-F1-F3-H-R-S-U	09140	B-C-D-E-F3-H-M-R-S-U	09264	B-C-E-F3-H-M-R-S-U		
09046	B-C-D-E-F3-H-M-R-S-U	09142	B-C-D-E-F3-H-M-R-S-U	09265	B-C-D-F-F1-H-J-L-M-N-R-S-T-U-V-Z1		
09049	B-C-D-E-F3-H-M-R-S-U	09154	B-C-D-E-F3-H-M-R-S-U	09266	A-B-F3-R-S-U-V-Z1		
09053	B-C-D-E-F3-H-M-R-S-U	09160	B-C-C2-D-F-F1-F3-H-J-L-M-N-R-R1-T-U-V-Z1	09276	A-B-F-F3-I3-L-M-N-R-S-T-V-X-Z-Z1		
09060	B-C-D-E-F1-F3-H-M-N-R-S-U-Z1	09170	A-B-C2-F-F1-F3-J-L-M-N-R-R1-S-T-V-X-Z1	09277	A-B-E-E1-E2-F1-F3-I3-L-N-R-S-T-V-X-Z-Z1		
09067	B-C-D-E-F3-H-M-R-S-U	09171	A-B-C1-C2-E3-F-F1-F3-J-L-M-N-R-R1-S-T-V-X-Z1	09278	A-B-F-F3-I3-L-M-N-R-S-T-V-X-Z-Z1		
09068	B-C-D-E-F3-H-R-S-U-Z1	09172	B-C-D-E-F3-H-M-R-S-U	09279	A-B-E-E1-F-F3-I3-L-M-N-R-S-T-V-X-Z-Z1		
09069	A-B-C-D-E-F3-H-N-R-S-U-V	09173	B-C-D-E-F3-H-M-R-S-U	09283	A-B-E-E1-F-F3-L-M-N-R-S-T-V-X-Z1		
09079	B-C-D-E-F3-H-M-R-S-U	09174	B-C-C2-F-F1-F3-I3-L-N-R-R1-S-T-V-X-Z-Z1				
09090	B-C-D-E-F3-H-M-R-S-U						

APO/ FPO/ DPO	See Restrictions	APO/ FPO/ DPO	See Restrictions	APO/ FPO/ DPO	See Restrictions	APO/ FPO/ DPO	See Restrictions
09320	A-B-C1-E2-F-F3-H1-M-N-R-R1-S-V-Z1	09489	A-B-C-C1-C2-E2-F1-F3-L-M-N-R-R1-S-T-V-W-X-Z1	09583	B-F-F1-F3-I3-J-R-R1-S-V-V1	09705	B-C-C1-F1-F3-M-R-R1-S-U
09321	A-B-C1-E2-F-F3-H1-M-N-R-R1-S-V-Z1	09494	B-C-C1-F3-M-R-S-U-Z1	09586	B-C2-F-F1-F3-R-R1-S-V	09706	B-C-F3-M-N-R-S-U-V-Z1
09322	A-B-C1-E2-F-F3-H1-M-R-R1-S-V-Z1	09498	B-C1-C2-F-F1-F3-J-L-N-R-R1-T-V-Z1	09587	B-C2-E2-E3-F-F1-F3-R-R1-S-V-Z1	09707	B-C2-F-F1-F3-J-L-M-N-R-R1-T-V-Z1
09330	A-B-C1-C2-D-E-E2-F-F1-F3-H-H1-M-R-R1-S-V-Z1	09501	B-V	09588	B-F-F1-F3-R-R1-S-V	09708	B-C-C1-F1-F3-M-R-R1-S-U
09333	A-B-C-C1-E2-F-F1-F3-H1-I3-M-N-R-R1-S-V-V1-Z-Z1	09502	B-V	09589	B-F-F1-F3-R-S-V	09709	B-C1-C2-E2-F-F1-F3-H1-J-L-N-R-R1-T-V-Z1
09343	A-B-C1-F-F3-M-N-R-R1-S-V-Z1	09503	B-F-F1-R-R1-V	09590	B-V	09710	B-C-C1-F-F1-J-L-M-N-R-R1-T-U-V-Z1
09347	A-B-C1-E2-F-F3-H1-M-R-R1-S-V-Z1	09504	B-V	09591	B-C2-E2-E3-F-F1-F3-R-R1-S-V-Z1	09712	A-B-F-F3-H-R-S-U-V-Z1
09348	A-B-C1-E2-F-F1-F3-H1-I3-M-N-R-R1-S-T-V-Z-Z1	09505	B-V	09592	B-F-F1-F3-R-R1-S-V	09714	B-C-C1-F1-F3-M-R-R1-S-U
09352	A-B-C1-E2-F-F3-H1-M-R-R1-S-V-Z1	09506	B-V	09593	B-F-F1-F3-R-S-V	09715	B-F-F1-J-L-M-N-R-T-V-Z1
09354	A-B-C1-E2-F-F3-H1-M-R-R1-S-V-Z1	09507	B-V	09594	B-C1-E2-F-F1-F3-R-R1-S-V	09716	B-C-C2-F-F1-F3-J-L-M-N-R-R1-T-V-Z1
09355	A-B-C1-E2-F-F3-H1-M-R-R1-S-V-Z1	09508	B-F-F1-R-R1-V	09595	B-F-F1-F3-I3-J-R-R1-S-V-V1-Z1	09717	A-B-F3-M-R-S-V-W-Z1
09356	A-B-C1-E2-F-F3-H1-M-N-R-V-Z1	09509	B-F-F1-R-R1-V	09596	B-F-F1-R-R1-V	09718	B-F-F1-J-L-M-N-R-T-U-V-Z1
09357	A-B-C1-E2-F-F3-H1-M-R-V-Z1	09510	A-B-C1-E2-F-H1-M-R-R1-V-Z1	09599	B-F-F1-R-R1-V	09719	B-C-D-F3-M-R-S-U-V-Z1
09363	A-B-C1-E2-F-F3-H1-M-R-R1-S-V-Z1	09511	B-F-F1-R-R1-V	09600	B-C-C2-F-F1-F3-R-S-U-Z1	09720	B-F3-M-R-S-U-V-Z1
09365	A-B-C-C1-E2-F-F3-H1-M-N-R-V-Z1	09512	B-F-F1-F3-R-R1-S-V	09602	B-C-F-F1-N-R-U-V	09722	A-B-F-F3-H-N-Q-S-V-Z-Z1
09366	A-B-C-C1-E2-F-F1-F3-H-H1-M-R-R1-S-V-Z1	09513	B-F-F1-F3-R-R1-S-V-V1	09603	B-C-F-F1-F3-R-S-U-V-Z1	09723	B-C2-F-F1-F3-J-L-M-N-R-R1-T-V-Z1
09378	A-B-C1-E2-F-F1-F3-H1-I3-M-N-R-R1-S-T-V-Z-Z1	09514	B-F-F1-F3-R-R1-S-V-V1	09604	B-C-F-F1-F3-P-R-S-U-V-Z1	09724	B-C-C1-F1-F3-M-R-R1-S-U
09401	B-C-C1-F3-M-R-S-U-Z1	09517	B-F-F1-F3-R-R1-S-V	09605	B-C-D-F3-H-M-R-S-U-V	09725	A-B-F-F3-H-N-Q-R-S-V-V1-Z-Z1
09403	B-C-C1-F3-M-R-S-U-Z1	09520	B-F-F1-F3-R-R1-S-V	09606	B-C-D-F3-H-M-R-S-U-V	09726	B-F-F1-J-L-M-N-R-T-U-V-Z1
09410	C2-F-F1-F3-N-R-S-U2	09522	B-F-F1-F3-R-S-V	09608	B-C-F-F3-N-R-S-U-V-Z1	09727	A-B-C1-C2-F-F1-F3-J-L-M-N-R-R1-T-V-Z1
09421	B-C-C1-F3-M-R-S-U-Z1	09523	B-F-F1-R-R1-V	09609	B-C-F-F3-N-R-S-U-Z1	09728	A-B-C-C1-C2-F-F1-F3-J-L-N-R-R1-T-V-Z1
09447	B-C-C1-F3-M-R-S-U-V-Z1	09524	B-F-F1-R-R1-V	09610	B-C-F-F1-F3-M-R-S-U-V-Z1	09729	B-C-F-F3-N-R-R1-S-U-V-Z1
09454	B-C-C1-F3-M-R-S-U-V-Z1	09532	B-F-F1-F3-R-R1-S-V	09613	B-C-F-F3-N-R-S-U-V	09730	A-B-C1-C2-F-F1-F3-J-L-M-N-R-R1-T-V-Z1
09456	B-C-C1-F3-M-N-R-S-U-V-Z1	09533	B-V	09614	A-B-C1-C2-E2-F-F1-F3-H1-J-L-M-N-R-R1-T-V-W-Z1	09731	A-B-C1-C2-F-F1-F3-J-L-M-N-R-R1-T-V-Z1
09459	B-C-C1-F3-M-R-S-U-Z1	09534	B-F-F1-F3-R-R1-S-V	09616	B-C-F3-M-R-S-U-V-Z1	09732	B-F-F3-N-S-V-Z-Z1
09461	B-C-C1-F3-M-P-R-S-U-Z1	09541	A-B-C-F-F3-M-N-S-V-Z1	09617	B-C-F-F3-R-U-Z1	09733	B-F-F3-N-R-S-V-Z
09463	B-C-C1-F3-M-R-S-U-Z1	09542	A-B-C-F-F3-M-N-S-V-Z1	09618	B-C-F-F3-R-S-U-V-Z1	09734	A-B-C-C1-C2-F-F1-F3-I3-J-L-M-N-R-R1-T-V-Z1
09464	B-C-C1-F3-R-S-U-Z1	09543	A-B-C-F-F3-M-N-S-V-Z1	09620	B-C-F-F3-R-S-U-V-Z1	09735	B-F3-N-R-S-V-Z-Z1
09467	B-E-E1-F-F3-J-L-M-N-R-S-T-V-X-Z1	09544	A-B-C-F-F3-M-N-S-V-Z1	09621	B-C-F-F3-R-U-Z1	09736	A-B-C1-F-F1-F3-J-L-M-N-R-R1-T-V-Z1
09468	B-C-C1-F3-M-R-S-U-Z1	09545	A-B-C-F-F3-M-N-S-V-Z1	09622	B-C-F-F3-R-S-U-V-Z1	09737	A-B-C1-C2-F-F1-F3-I3-J-L-M-N-R-R1-T-V-W-Y-Z-Z1
09469	B-C-C1-F3-R-S-U-Z1	09550	B-F-F1-R-R1-V	09623	B-C-F-F3-R-S-U-V-Z1	09738	A-B-C1-C2-F-F1-F3-J-L-M-N-R-R1-T-V-Z1
09470	B-C-C1-F3-M-R-S-U-Z1	09554	B-F-F1-R-R1-V	09624	B-C-C2-F-F1-F3-I3-L-N-R-R1-T-U-V-Z-Z1	09739	A-B-C1-C2-F-F1-F3-J-L-M-N-R-R1-T-V-Z1
09487	A-B-C-C1-C2-E2-F1-F3-I3-L-M-N-R-R1-S-T-V-W-X-Z-Z1	09556	B-F-F1-R-R1-V	09625	B-C-F-F3-N-R-S-U-Z1	09741	A-B-C1-C2-E2-F-F1-F3-H1-J-L-M-N-R-R1-T-V-W-Y-Z1
09488	A-B-C-C1-C2-E2-F3-J-L-M-N-S-T-V-W-X-Z1	09565	B-F-F1-F3-R-R1-S-V	09627	B-C-F-F3-R-S-U-V-Z1	09742	A-B-C2-F-F1-F3-J-L-M-N-R-R-S-T-V-Z1
		09566	B-C2-E2-E3-F-F1-F3-R-R1-S-V-Z1	09630	B-C-F-F3-R-S-U-V		
		09567	B-C2-E2-E3-F-F1-F3-R-R1-V-Z1	09633	B-C-D-F-F1-F3-M-R-S-U-U1-U2-U3-V-Z1		
		09568	B-V	09634	A-B-F-F3-M-N-R-S-V		
		09569	B-C2-E2-E3-F-F1-F3-R-R1-V-Z1	09636	B-C-F-F3-R-U-V-Z1		
		09570	A-B-F-F1-F3-R-R1-S-V	09642	B-C2-F-F1-F3-J-L-M-N-R-T-U-V		
		09573	B-C2-E2-E3-F-F1-F3-R-R1-S-V-Z1	09643	B-C-F3-M-R-S-U-V-Z1		
		09574	B-F-F1-R-R1-V	09645	B-C-F-F1-F3-R-S-U-Z1		
		09575	B-F-F1-R-R1-V	09647	B-F1-F3-M-N-R-S-U-Z1		
		09576	B-F-F1-R-R1-V	09648	B-F3-N-R-S-U-V-Z1		
		09577	B-F3-S-V	09649	B-F3-N-R-S-U-Z1		
		09578	B-F-F1-F3-R-R1-S-V-Z1	09701	A-B-C1-C2-F-F1-F3-J-L-M-N-R-R1-T-V-Z1		
		09579	B-F-F1-R-R1-V	09702	B-C-C1-F1-F3-M-R-R1-S-U		
		09581	B-F-F1-F3-R-R1-S-V	09704	B-C-V-V1		
		09582	B-C2-F-F1-F3-R-R1-S-V				



APO/ FPO/ DPO	See Restrictions	APO/ FPO/ DPO	See Restrictions	APO/ FPO/ DPO	See Restrictions	APO/ FPO/ DPO	See Restrictions
09743	A-B-F-F3-H-N-Q-R-S-V-Z-Z1	09814	B-C2-E2-E3-F-F1-F3-I3-J-L-N-R-R1-T-V-Z-Z1	09858	A-B-C-C1-C2-E2-E3-F1-F3-H-H1-J-M-N-R-R1-S-U-V-Z1	34002	B-C1-C2-F-F1-F3-J-L-M-N-R-R1-T-V-Z1
09744	A-B-C1-C2-F-F1-F3-J-L-M-N-R-R1-T-V-Z1	09816	A-B-C1-C2-E2-E3-F-F1-F3-J-L-N-R-R1-T-V-Z1	09859	B-C-C1-C2-E2-E3-F-F1-F3-H1-R-R1-S-U-Z1	34004	B-C1-C2-F-F1-F3-J-L-M-N-R-R1-T-V-Z1
09745	A-B-F-F1-F3-M-N-R-R1-S-V-Z1	09817	A-B-C1-C2-E2-E3-F-F1-F3-H-H1-J-L-M-N-R-R1-T-V-Z1	09860	A-B-C2-F-F1-F3-J-L-M-N-R-R1-S-T-V-Z1	34007	B-F-F1-H-J-M-N-R-R1-V-Z1
09748	A-B-C1-C2-F-F1-F3-J-L-M-N-R-R1-T-V-Z1	09818	A-B-C-F-F3-M-S-V-Z1	09862	A-B-C-C2-F-F1-F3-I3-L-M-N-R-R1-S-T-V-X-Z-Z1	34008	B-C1-C2-D-E1-F-F1-H-H1-J-L-M-N-R-R1-T-V-Z1
09749	A-B-F-F3-H-N-R-S-U-V-Z1	09820	A-B-C2-F-F1-F3-H-H1-J-L-M-N-R-R1-T-V-Z1	09864	A-B-C-C1-C2-E2-F1-F3-L-M-N-R-R1-S-T-V-W-Z1	34011	B-C1-C2-E2-F-F1-F3-J-L-M-N-R-R1-T-V-Z1
09750	A-B-C1-C2-F-F1-F3-J-L-M-N-R-R1-T-V-Z1	09821	A-B-C-F-F3-N-R-S-V-Z1	09865	A-B-F3-R-S-U-V-Z1	34020	B-C1-C2-F-F1-F3-J-L-M-N-R-R1-T-V-Z1
09751	B-C-D-E-F3-H-M-R-S-U	09822	A-B-C-F-F3-M-R-S-V-Z1	09867	A-B-C-C1-C2-E2-F1-F3-L-M-N-R-R1-S-T-V-W-Z1	34021	B-C1-C2-F-F1-F3-J-L-M-N-R-R1-T-V-Z1
09752	B-C-D-F1-F3-H-R-S-U	09823	A-B-C1-C2-F-F1-F3-J-L-M-N-R-R1-T-V-Z1	09868	A-B-E1-E2-E3-F1-F3-M-N-R-S-U-V-Z1	34022	B-C1-C2-F-F1-F3-J-L-M-N-R-R1-T-V-Z1
09753	A-B-F-F3-N-R-S-V-Z1	09824	A-B-C-F-F3-M-R-S-V-Z1	09869	A-B-C1-C2-E2-F1-F3-L-M-N-R-R1-S-T-V-W-Z1	34023	B-C1-C2-F-F1-F3-J-L-M-N-R-R1-T-V-Z1
09754	A-B-F-F3-H-L-N-Q-R-S-V-Z-Z1	09825	A-B-C1-C2-F-F1-F3-J-L-M-N-R-R1-T-V-Z1	09870	A-B-C1-C2-E2-F-F1-F3-H1-I3-L-M-N-R-R1-S-T-U4-V-Z-Z1	34024	B-C1-C2-F-F1-F3-J-L-M-N-R-R1-T-V-Z1
09755	A-B-C-C1-D-F-F1-F3-J-L-M-N-Q-R-R1-S-T-V-Z1	09826	A-B-C1-C2-E1-E2-E3-F-F1-F3-J-L-M-N-R-R1-T-V-W-Z1	09873	A-B-C1-C2-E2-F-F1-F3-H1-I3-L-M-N-R-R1-S-T-U4-V-Z-Z1	34025	B-F-F1-F3-J-L-M-N-R-R1-T-V-Z1
09758	A-B-F-F1-F3-M-N-R-R1-S-V-Z1	09827	A-B-F-F1-J-L-M-N-R-T-V-Z1	09874	A-B-C1-C2-E2-F-F1-F3-H1-I3-L-M-N-R-R1-S-T-U4-V-Z-Z1	34030	B-C1-C2-F-F1-F3-J-L-M-N-R-R1-T-V-Z1
09759	A-B-C-C1-C2-E2-F-F1-F3-J-L-N-R-R1-T-V-Z1	09828	A-B-C1-C2-F-F1-F3-I3-L-N-R-R1-T-V-Z-Z1	09877	A-B-C-C2-E-E2-E3-F1-F3-H-H1-J-M-N-R-R1-S-U-V-Z1	34031	B-C1-C2-F-F1-F3-J-L-M-N-R-R1-T-V-Z1
09761	B-F-F1-F3-M-R-R1-S-V-Z-Z1	09829	B-C-N-R-V-Z1	09878	A-B-C1-C2-E2-F-F1-F3-H1-I3-L-M-N-R-R1-S-T-U4-V-Z-Z1	34032	B-C1-C2-F-F1-F3-J-L-M-N-R-R1-T-V-Z1
09762	A-B-C2-E3-F-F1-F3-J-L-N-R-R1-T-V-Z1	09830	B-C-F-F1-F3-J-L-M-N-R-R1-S-T-V-Z1	09875	A-B-C1-C2-E2-F-F1-F3-H1-I3-L-M-N-R-R1-S-T-U4-V-Z-Z1	34033	B-C1-C2-F-F1-F3-I3-L-M-N-R-T-V-Z-Z1
09769	A-B-C-C1-C2-F-F1-F3-J-L-M-N-R-R1-T-V-Z1	09831	B-C1-C2-F-F1-F3-J-L-N-R-R1-T-V-Z1	09877	A-B-C-C2-E-E2-E3-F1-F3-H-H1-J-M-N-R-R1-S-U-V-Z1	34034	B-C1-C2-F-F1-F3-I3-L-M-N-R-R1-T-V-Z-Z1
09777	A-B-C-C1-C2-E1-F-F1-F3-J-L-M-N-R-R1-T-V-Z1	09832	B-C1-E2-F1-F3-N-R-S-V-Z1	09880	A-B-C1-C2-E2-F-F1-F3-H1J-L-N-R-R1-S-T-U-V-Z1	34035	B-C1-C2-F-F1-F3-H-J-L-M-N-R-R1-T-V-Z1
09780	A-B-F-F3-H-N-R-S-V	09833	B-C1-E2-F1-F3-N-R-S-V-Z1	09889	B-E2-F-H1-N-R-R1-U2-V-Z1	34036	B-C1-C2-F-F1-F3-J-L-M-N-R-R1-T-V-Z1
09789	A-B-C2-F-F3-N-R-S-V-Z1	09834	B-C-C2-E2-E3-F-F1-F3-R-R1-S-U-Z1	09892	A-B-C1-C2-E2-F-F1-F3-J-L-M-N-R-R1-T-V-Z1	34037	B-C-C1-C2-F-F1-F3-H-J-L-M-N-R-R1-T-V-Z1
09801	A-B-C1-E2-F-F3-H1-M-N-R-R1-S-V-Z1	09836	A-B-C1-C2-F-F1-F3-J-L-M-N-R-R1-V-Z1	09895	A-B-C1-C2-E2-F-F1-F3-J-L-M-N-R-T-V-W-Z1	34039	B-C1-C2-F-F1-J-L-M-N-T-V-Z1
09802	A-B-C-C2-D-F-F1-F3-H1-I3-L-M-N-R-R1-S-T-V-W-Z-Z1	09837	B-E2-E3-F1-F3-R-S-V-Z1	09898	B-C-C1-C2-E2-F-F1-F3-H1-N-R-R1-S-U2-V-Z1	34041	B-C1-C2-F-F1-F3-J-L-M-N-R-R1-T-V-Z1
09803	A-B-C-C2-E-E2-E3-F1-F3-H-H1-J-M-N-R-R1-S-U-V-Z1	09838	B-C-C2-E2-E3-F-F1-F3-R-S-U-Z1	09902	A-B-C1-E2-F-F3-H1-M-R-R1-S-V-Z1	34042	A-B-C-F-F1-F3-M-N-R-S-U-V-W-Z1
09804	A-B-F-F1-F3-M-N-R-S-V-Z1	09841	A-B-F3-N-R-S-U-Z1	09903	B-C1-E2-F1-F3-S-V-Z1	34050	B-V
09805	B-C-C2-E2-E3-F-F1-F3-R-R1-S-Z1	09842	A-B-C1-C2-F-F1-F3-J-L-N-R-R1-T-V-Z1	09904	B-C1-E2-F1-F3-S-V-Z1	34051	B-V
09806	A-B-C1-C2-E2-F-F1-F3-H1-J-L-M-N-R-R1-T-V-Z1	09844	A-B-C1-C2-F-F1-F3-J-L-M-N-R-R1-T-V-Z1	09908	A-B-F-F1-F3-N-R-R1-S-V-Z1	34052	B-V
09808	A-B-C1-C2-E2-F-F1-F3-H-H1-J-L-N-R-R1-T-V-Z1	09845	A-B-C1-C2-E3-F-F1-F3-J-L-M-N-R-R1-T-V-Z1	09909	A-B-F-F1-F3-N-R-R1-S-V-V1-Z1	34054	B-V
09809	B-C1-C2-E3-F-F1-F3-J-L-N-T-V-Z1	09846	A-B-C1-C2-F-F1-F3-J-L-N-R-R1-T-V-Z1	09974	B-F1-F3-J-L-M-N-R-S-T-U2-V-X-Z1	34055	B-C1-C2-F-F1-F3-J-L-M-N-R-R1-T-V-Z1
09810	A-B-F-F1-F3-N-R-S-V-Z1	09847	B-C-C2-F-F1-F3-J-L-M-N-R-R1-S-T-V-Z1	09975	B-F1-F3-I3-L-M-N-R-S-T-U2-V-X-Z-Z1	34058	B-F-F1-F3-R-R1-S-V-Z1
09811	A-B-C-C2-E-E2-E3-F1-F3-H-H1-J-M-N-R-R1-S-U-V-Z1	09848	A-B-F-F3-M-R-S-V-Z1	09976	B-F1-F3-J-L-M-N-R-S-T-U2-V-X-Z1	34060	B-C1-C2-E2-F-F1-F3-J-L-M-N-R-R1-T-V-Z1
09812	B-E2-E3-F-F1-I-J-L-N-R-T-U-V-Z-Z1	09853	B-C1-E2-F-F1-F3-H1-N-R-R1-S-U2-V-Z1	09977	B-F1-F3-J-L-M-N-R-S-T-U2-V-X-Z1	34066	B-C1-C2-F-F1-F3-I3-J-L-M-N-R-R1-S-T-V-X-Z-Z1
09813	A-B-C1-C2-E2-E3-F-F1-F3-J-L-N-R-R1-T-V-Z1	09854	A-B-C1-C2-F-F1-F3-J-L-N-R-R1-S-T-V-Z1	34001	A-B-C1-C2-F-F1-F3-J-L-M-N-R-R1-S-T-V-Z1	34067	B-C1-C2-F-F1-F3-J-L-M-N-R-R1-S-T-V-X-Z1
		09855	A-B-C1-E2-F-F1-F3-H1-M-R-R1-S-U2-V-Z1			34068	B-C1-C2-F-F1-F3-J-L-M-N-R-R1-S-T-V-X-Z1
		09856	B-C-C1-C2-F-F1-F3-H1-J-L-M-N-S-T-V-Z1			34069	B-C1-C2-F-F1-F3-I3-J-L-M-N-R-R1-S-T-V-X-Z-Z1
		09857	A-B-C2-E2-F-F1-F3-I3-L-M-N-R-R1-S-T-V-Z-Z1				

APO/ FPO/ DPO	See Restrictions	APO/ FPO/ DPO	See Restrictions	APO/ FPO/ DPO	See Restrictions	APO/ FPO/ DPO	See Restrictions
34078	B-F1-F3-N-R-S-V-Z1	96303	B-C1-C2-F-F1-H-J-L-M-N-T-V-W-Z1	96504	A-B-C-C1-C2-F-F1-F3-I3-L-M-N-R-R1-T-V-W-Z-Z1	96606	B-F3-R-S-V
34080	B-F-F1-R-R1-V	96306	B-F-F1-F2-F3-H-M-R-S-W-Z1	96505	A-B-C-C1-C2-F-F1-F3-I3-L-M-N-R-R1-S-T-V-W-Z-Z1	96607	B-V
34081	B-F-F1-R-R1-V	96310	B-F3-M-R-S-W	96507	A-B-C1-C2-F-F1-H-J-L-M-N-T-V-Z1	96608	B-E2-F-H1-R1-U2-V-Z1
34082	B-F-F1-R-R1-V	96311	B-F3-M-R-S-W	96510	B-I3-N-V	96609	B-E2-F-H1-R1-U2-V-Z1
34083	B-F-F1-R-R1-V	96319	B-C-F3-M-R-S-V-W	96511	B-I3-N-V	96610	B-E2-F-H1-R1-U2-V-Z1
34084	B-F-F1-R-R1-V	96321	B-F-F1-F2-F3-H-M-R-S-W-Z1	96515	B-C-D-E1-F-F1-F3-H1-M-N-R-S-T-Z1	96611	B-E2-F-H1-R1-U2-V-Z1
34085	B-F-F1-F3-R-R1-S-V	96322	B-F-F1-F2-F3-H-M-R-S-W-Z1	96516	B-C-D-E1-E2-F-F1-F3-H-H1-M-N-R-S-T-Z1	96612	B-V
34086	B-F-F1-F3-R-R1-S-V	96326	B-C-F-F3-M-R-S-W	96517	B-C-D-E1-E2-F-F1-F3-H-H1-M-N-R-T-U-V-Z1	96613	B-V
34087	B-E2-F-F1-F3-R-R1-S-V	96328	B-C-F3-M-R-S-W	96520	B-F-N-U3-V	96615	B-F-F1-R-R1-V
34088	B-F-F1-R-R1-V	96331	A-B-F-F1-F3-J-L-M-N-R-S-U2-W	96521	B-C1-C2-F-F1-J-L-M-N-R-R1-S-T-V-Z1	96616	B-C2-F-F1-F3-R-R1-S-V
34089	B-F-F1-R-R1-S-V	96336	B-C-F3-M-R-S-V-W	96530	A-B-C1-C2-F-F1-H-H1-J-L-M-N-R-R1-S-T-V-Z1	96617	B-F-F1-F3-R-R1-S-V
34090	B-F-F1-R-R1-V	96337	B-F-F1-F3-M-R-R1-S-W	96531	A-B-C-F-F1-F3-H-M-N-R-S-U-V	96619	B-F1-F3-R-S-V
34091	B-E2-E3-F-F1-F3-R-R1-S-V-Z1	96338	A-B-F-F3-M-R-S-U2-W	96532	A-B-C1-C2-F-F1-H-J-L-M-N-R-R1-S-T-V-Z1	96620	B-F-F1-F3-R-R1-S-V
34092	B-F-F1-F3-R-R1-S-V	96339	A-B-F-F3-M-R-S-U2-W	96533	A-B-C1-C2-F-F1-H-J-L-M-N-R-R1-S-T-V-Z1	96622	B-F-F1-F3-R-R1-S-V
34093	B-F-F1-F3-R-R1-S-V	96343	A-F-F3-M-P-R-S-U2	96537	B-V-Z1	96629	B-F-F1-F3-R-R1-S-V
34094	B-F-F1-F3-R-R1-S-V	96346	B-F-F1-F2-F3-H-M-R-S-W-Z1	96540	B-F1-F2-F3-S-Z1	96632	B-F-F1-F3-R-R1-S-V
34095	B-F-F1-R-R1-V	96347	B-F-F1-F2-H-M-W-Z1	96542	B-V-Z1	96633	B-V
96201	A-B-F-F1-F3-M-R-S-U	96349	B-F-F1-F2-F3-H-M-R-S-W-Z1	96543	B-F-F1-F2-F3-P-S-V-Z1	96641	B-V
96202	A-B-F-F1-F3-M-R-S-U	96350	B-F-F1-F2-F3-H-M-R-S-W-Z1	96548	A-B-F-F1-F3-H-M-R-S-U	96642	B-V
96203	A-B-F-F1-F3-M-R-S-U	96351	B-F-F1-F2-F3-H-M-R-S-W-Z1	96549	A-B-C1-C2-F-F1-H-J-L-M-N-R-R1-S-T-V-Z1	96643	B-F-F1-F3-R-R1-S-V
96204	A-B-F-F1-F3-M-R-S-U	96362	B-F-F1-F2-M-W-Z1	96550	A-B-H-M-N-U-V-Z1	96644	B-V
96205	A-B-F-F1-F3-M-R-S-U	96365	B-C-F3-M-R-S-V-W	96551	A-B-C1-C2-F-F1-H-J-L-M-N-R-R1-S-T-V-Z1	96645	B-V
96206	A-B-F-F1-F3-M-R-S-U	96367	B-C-F3-L-M-R-S-W	96552	B-Z1	96649	B-F-F1-F3-R-R1-S-V
96207	A-B-F-F1-F3-M-R-S-U-V	96368	B-C-F3-M-R-S-W	96553	A-B-F-F1-H-M-N-R-U	96650	B-F-F1-R-R1-V
96208	A-B-F-F1-F3-M-R-S-U	96370	B-F-F1-F2-H-M-W-Z1	96554	A-B-C1-C2-F-F1-H-J-L-M-N-R-R1-S-T-V-Z1	96655	B-F-F1-F3-R-R1-S-V
96209	A-B-C1-C2-F-F1-J-L-M-N-T-U-V-Z1	96371	B-F-F3-M-R-S-W	96555	A-B-F-F3-M-R-S-V	96660	B-F-F1-F3-R-R1-S-V
96210	A-B-C1-C2-F-F1-F3-I3-L-M-N-R-R1-T-V-Z-Z1	96372	B-M-W	96557	A-B-F-F3-M-R-S-V	96661	B-F-F1-F3-R-R1-S-V
96212	B-F-F1-F2-H-M-W-Z1	96373	B-M-W	96562	A-B-C1-C2-D-E2-E3-F-F1-H-H1-I3-L-M-N-R-R1-S-T-V-Z-Z1	96662	B-F-F1-F3-R-R1-S-V
96213	A-B-C-F1-F3-R-S-U	96374	B-M-W	96577	A-B-F-F3-H-M-N-R-S-U	96663	B-V
96214	A-B-C-F1-F3-R-S-U	96375	B-F3-M-R-S-W	96578	B-F1-F3-H-J-N-R-S	96664	B-V
96218	A-B-F-F1-F3-M-R-S-U	96376	B-F3-M-R-S-W	96595	B-F-F3-R-S-V-Z1	96665	B-V
96224	A-B-F-F1-F3-M-R-S-U	96377	B-F-F3-M-R-S-W	96598	B-F3-I3-N-R-S-V-V1	96666	B-F3-R-S-V
96251	A-B-F-F1-F3-M-R-S-U	96378	B-M-W	96599	B-F3-N-R-S-V	96667	B-F-F1-F3-R-R1-S-V
96257	A-B-F-F1-F3-S-U	96379	B-F3-M-R-S-W	96601	B-V	96669	B-F-F1-F3-R-R1-S-V
96258	A-F-F3-M-P-R-S-U	96380	B-F3-M-R-S-W	96602	B-V	96695	B-F-F1-R-R1-V
96260	A-B-F-F1-F3-M-R-S-U	96382	B-F-F3-M-R-S-W	96603	B-V	96696	B-F-F1-R-R1-V
96262	A-B-F-F1-F3-R-S-U-V-Z1	96384	B-F-F3-M-R-S-W	96604	B-V	96698	B-V
96264	A-B-C-F1-F3-R-S-U	96385	B-F-F3-M-R-S-W	96605	B-V+B559		
96266	A-B-C-F1-F3-R-S-U	96386	B-F3-M-S-W				
96267	A-B-C-F1-R-U-V	96387	B-F3-M-S-W				
96269	A-B-F1-F2-F3-R-S-U-Z1	96388	B-F3-M-R-S-W				
96271	A-F-F3-M-P-R-S-U	96389	B-M-W				
96273	A-B-F-F1-F3-M-R-S-U	96401	B-C-F-F3-N-R-S-V-V1-Z1				
96275	A-B-F-F1-F3-M-R-S-U	96501	A-B-N-V				
96276	A-B-C-F1-R	96502	A-C1-F-F1-F3-M-N-Q-R-R1-S-T-U2-V				
96278	A-B-C-F1-F3-R-S-U						
96283	A-B-F-F1-F3-S-U						
96284	A-B-F-F1-F3-R-S-U						
96297	A-B-F-F1-F3-M-R-S-U						
96300	A-B-F3-M-R-S-V-Z1						
96301	A-B-F-F3-M-N-R-S-U2-W						

## RESTRICTIONS

## LEGEND

PS Form 2976, *Customs — CN 22 (Old C 1) and Sender's Declaration* (green label)

PS Form 2976-A, *Customs Declaration and Dispatch Note*

PS Form 2976-B, *Priority Mail Express International Shipping Label and Customs Form*

ATF	= Bureau of Alcohol, Tobacco, Firearms, and Explosives
Box C	= Department of State (DOS) contractor personnel
Box R	= Retired military personnel
DPO	= Diplomatic Post Office
MPO	= Military Post Office
PACT	= Prevent All Cigarette Trafficking Act
PAL	= Parcel Airlift
PMEMS	= Priority Mail Express Military Service
PUB 52	= Publication 52, <i>Hazardous, Restricted, and Perishable Mail</i>
SAM	= Space Available Mail
USDA	= United States Department of Agriculture

**Note:** Mail order catalogs are prohibited as SAM or PAL mail.

**A.** Securities, currency, or precious metals, including in their raw, unmanufactured state, are prohibited. Official Mail shipments are exempt from this restriction.

**A1.** Reserved for future use.

**A2.** Reserved for future use.

**B.** Other than for PMEMS and the exceptions listed below, a customs declaration PS Form 2976 or PS Form 2976-A is required for all items weighing 16 ounces or more, and for all items (regardless of weight) containing potentially dutiable mail contents (e.g., merchandise or goods) addressed to or from this ZIP Code. Other than the exceptions listed below, all PMEMS mailpieces (regardless of mail contents or weight) addressed to or from this ZIP Code must bear a properly completed PS Form 2976-B. The surface area of the address side of the mailpiece must be large enough to contain the applicable customs declaration. The following exceptions apply to known mailers, who for this purpose are defined as follows:

- Business mailers who enter volume mailings through business mail entry units or other bulk mail acceptance locations, pay postage through advance deposit accounts, use permit imprints for postage payment, and submit completed postage statements at the time of entry that certify that the mailpieces contain no dangerous materials that are prohibited by postal regulations. Such business mailers are exempt from providing customs documentation on non-dutiable letters and printed matter.
- All federal, state, and local government agencies whose mailings are regarded as "Official Mail." Such agencies are exempt from providing customs documentation, except for any items addressed to an MPO or DPO to which restriction "B2" applies.

**B2.** All federal, state, and local government agencies must complete customs documentation when sending potentially dutiable mail addressed to or from this MPO or DPO.

**C.** Cigarettes and other tobacco products, including tobacco leaves, chewing and pipe tobacco, snuff, and cigars are prohibited, including those that are authorized in Publication 52 under PACT.

**C1.** Obscene and horror articles, images, prints, paintings, cards, films, videotapes, comic books, etc., are prohibited.

**C2.** E-cigarettes and related products (e.g., nicotine liquids, e-liquids, parts, or supplies) are prohibited.

**D.** Coffee is prohibited.

**E.** Medicines (prescription, over-the-counter, vitamins, and supplements) are prohibited when mailed to individuals for human or animal use. This prohibition does not apply when medicines are sent as Official Mail only between specifically designated agencies such as pharmaceutical distributors, hospitals, clinics, and pharmacies.

**E1.** Mailers are responsible to ensure that all medicines and vaccines conform to host nation laws.

**E2.** Any matter depicting nude or seminude persons, pornographic, or sexual items are prohibited. Non-authorized political materials are prohibited. Religious materials contrary to the Islamic faith are prohibited in bulk quantities, but individual items for the personal use of the addressee are permissible.

**E3.** Radio transceivers, cordless/cellular telephones, global positioning systems, scanners, base stations, and handheld transmitters are prohibited.

**F.** Firearms of any type are prohibited, except firearms mailed to or by official U.S. government agencies. This restriction does not apply to firearms mailed from this MPO ZIP Code, provided ATF and USPS regulations are met. Antique firearms do not require an ATF form.

**F1.** Weapons of any type are prohibited.

**F2.** Mailing firearms to or from this MPO ZIP Code is restricted to one shotgun and one single shot .22 caliber rifle per individual.

**F3.** Replica weapons and inert explosive devices (such as grenades) and weapons parts are prohibited.

**G.** Parcels of any class are prohibited.

**H.** Meats, including preserved meats, bones, skin, hair, feathers, horns or hoofs of hoofed animals, and wool samples whether hermetically sealed or not, are prohibited.

**H1.** Pork or pork by-products are prohibited.

**I.** Reserved for future use.

**I1.** Reserved for future use.

**I2.** Reserved for future use.

**I3.** Mail of all classes must fit in a mail sack. Mail may not exceed the following dimensions:

- Maximum length 27 inches.
- Maximum width 14 inches.
- Maximum height 14 inches.

**J.** Standard Post and Parcel Select parcels may not exceed 108 inches in length and girth combined.

**K.** Reserved for future use.

**L.** All Official Mail is prohibited.

**M.** Fruits, vegetables, live animals, and live plants are prohibited.

**N.** Registered Mail service is prohibited.

**O.** Reserved for future use.

**P.** Official Mail only.

**Q.** Mail may not exceed 66 pounds, and size is limited to 42 inches maximum length and 72 inches maximum length and girth combined.

**R.** All alcoholic beverages, including those mailable under Publication 52, Part 421, are prohibited.

**R1.** Materials used in the production of alcoholic beverages (i.e., distilling material, hops, malts, yeast, etc.) are prohibited.

**S.** Synthetic cannabinoids used to stimulate the central nervous system commonly known as "synthetic marijuana," "K2," or "Spice" are prohibited.

**T.** Mailings of household shipments and case lots of food to or from an MPO require military transportation office approval prior to mailing. Mailings to or from a DPO require pre-approval from the Diplomatic Pouch and Mail Director.

**U.** Mail addressed to Retirees (Box R) is limited to 16 ounces and up to a 90-day supply of TRICARE medications. This restriction does not apply to mail endorsed "Free Matter for the Blind or Handicapped."

**U1.** Mail is limited to First-Class Mail items, including audio and video media, weighing 13 ounces or less. This limitation does not apply to Official Mail.

**U2.** Retirees (Box R) are not authorized mail service.

**U3.** Reserved for future use.

**U4.** Mail addressed to Box C is limited to 2 lbs.

**V.** PMEMS is not available.

**V1.** Electronic Delivery status information for Extra Services is not available on *USPS.com*. Manual record of delivery may be available upon request.

**W.** Hermetically sealed packages of meat products bearing USDA certification, such as dried beef, salami, and sausage, may be mailed. 200 grams of tobacco per parcel are permitted duty free.

**X.** Cremated remains are prohibited.

**Y.** Mail is limited to First-Class Mail and Priority Mail items only. This restriction also applies to Official Mail.

**Z.** No outside pieces (OSPs).

**Z1.** The following restriction is applicable only to International Service Centers (ISC)/Exchange Offices. An Anti-Pilferage Seal (Item No O817E or O818A) is required on all pouches and sacks.

## Thrift Savings Plan Fact Sheet

ANNUAL RETURNS	G Fund	F Fund	U.S. Aggregate Index	C Fund	S&P 500 Stock Index	S Fund	Dow Jones U.S. Completion TSM Index	I Fund	EAFE Stock Index
2006	4.93	4.40	4.33	15.79	15.79	15.30	15.28	26.32	26.34
2007	4.87	7.09	6.97	5.54	5.49	5.49	5.39	11.43	11.17
2008	3.75	5.45	5.24	-36.99	-37.00	-38.32	-39.03	-42.43	-43.38
2009	2.97	5.99	5.93	26.68	26.46	34.85	37.43	30.04	31.78
2010	2.81	6.71	6.54	15.06	15.06	29.06	28.62	7.94	7.75
2011	2.45	7.89	7.84	2.11	2.11	-3.38	-3.76	-11.81	-12.14
2012	1.47	4.29	4.22	16.07	16.00	18.57	17.89	18.62	17.32
2013	1.89	-1.68	-2.02	32.45	32.39	38.35	38.05	22.13	22.78
2014	2.31	6.73	5.97	13.78	13.69	7.80	7.63	-5.27	-4.90
2015	2.04	0.91	0.55	1.46	1.38	-2.92	-3.42	-0.51	-0.81
2016	1.82	2.91	2.65	12.01	11.96	16.35	15.75	2.10	1.00
2017	2.33	3.82	3.54	21.82	21.83	18.22	18.12	25.42	25.03
2018	2.91	0.15	0.01	-4.41	-4.38	-9.26	-9.57	-13.43	-13.79
2019	2.24	8.68	8.72	31.45	31.49	27.97	27.94	22.47	22.01
2020	0.87	4.73	4.72	17.16	17.25	36.45	36.67	9.99	8.94

MONTHLY RETURNS	G Fund	F Fund	U.S. Aggregate Index	C Fund	S&P 500 Stock Index	S * Fund	Dow Jones U.S. Completion TSM Index	I * Fund	EAFE Stock Index
<b>2020</b>									
Feb	0.13	1.82	1.80	-8.24	-8.23	-8.01	-7.96	-7.74	9.04
Mar	0.11	-0.64	-0.59	-12.40	-12.35	-21.40	-21.36	-13.87	-13.35
Apr	0.07	1.78	1.78	12.81	12.82	15.81	15.82	6.42	6.46
May	0.06	0.46	0.47	4.76	4.76	8.79	8.82	4.50	4.35
June	0.06	0.63	0.63	1.99	1.99	4.00	4.05	3.44	-3.41
July	0.06	1.49	1.49	5.64	5.64	5.71	5.70	2.33	2.33
Aug	0.05	-0.81	-0.81	7.19	7.19	7.20	7.18	5.12	5.14
Sept	0.06	-0.03	-0.05	-3.80	-3.80	-3.04	-2.99	-2.60	-2.60
Oct	0.06	-0.42	-0.45	-2.66	-2.66	0.50	0.45	-3.97	-3.99
Nov	0.07	0.99	0.98	10.95	10.95	18.26	18.27	15.54	15.50
Dec	0.07	0.14	0.14	3.84	3.84	7.24	7.24	4.64	4.65
<b>2021</b>									
Jan	0.07	-0.71	-0.72	-1.01	-1.01	2.85	2.84	-1.09	-1.07
<b>YTD</b>	<b>0.07</b>	<b>-0.71</b>	<b>-0.72</b>	<b>-1.01</b>	<b>-1.01</b>	<b>2.85</b>	<b>2.84</b>	<b>-1.09</b>	<b>-1.07</b>

The G Fund is managed internally by the Federal Retirement Thrift Investment Board. Assets of the F, C, S, and I Funds are managed externally. The Board currently has contracts with BlackRock Institutional Trust Company, N.A., to manage the F, C, S, and I Fund assets. The F, C, S, and I Funds invest in commingled trust funds, in which the assets of tax-deferred employee benefit plans are combined and invested together. The F, C, S, and I Funds and the BlackRock funds are passively managed index funds.

Future performance of the funds will vary and may be significantly different from the returns shown above. See the *Summary of the*

*Thrift Savings Plan* for detailed information about the funds and their investment risks. The monthly returns of the TSP Funds represent net earnings for the month after deduction of accrued administrative expenses and, except for the G Fund, after deduction of trading costs and accrued investment management fees as well. The returns for the four indexes shown do not include any of these deductions.

\* Implemented May 2001.

**See next page for L Funds.**

**L Funds**

Annual Returns	L Income	L 2020	L 2030	L 2040	L 2050
2006	7.59	13.72	15.00	16.53	
2007	5.56	6.87	7.14	7.36	
2008	-5.09	-22.77	-27.50	-31.53	
2009	8.57	19.14	22.48	25.19	
2010	5.74	10.59	12.48	13.89	
2011	2.23	0.41	-0.31	-0.96	
2012	4.77	10.42	12.61	14.27	15.85
2013	6.97	16.03	20.16	23.23	26.20
2014	3.77	5.06	5.74	6.22	6.37
2015	1.85	1.35	1.04	0.73	0.45
2016	3.58	5.47	7.07	7.90	8.65
2017	6.19	9.86	14.54	16.77	18.81
2018	0.71	-0.36	-3.58	-4.89	-6.02
2019	7.60	9.38	17.60	20.69	23.33
2020	5.04		11.41	13.41	15.14

Monthly Returns	L Income	L 2025	L 2030	L 2035	L 2040	L 2045	L 2050	L 2055	L 2060	L 2065
<b>2020</b>										
July	1.11	2.19	2.82	2.86	3.35	3.32	3.80	4.13	4.13	4.13
Aug	1.39	3.17	3.81	4.18	4.56	4.88	5.21	6.41	6.40	6.40
Sept	-0.66	-1.58	-1.92	-2.11	-2.30	-2.46	-2.63	-3.20	-3.20	-3.20
Oct	-0.58	-1.30	-1.61	-1.76	-1.91	-2.04	-2.17	-2.60	-2.60	-2.60
Nov	3.00	6.56	8.10	8.92	9.74	10.47	11.19	13.55	13.55	13.55
Dec	1.07	2.27	<b>2.79</b>	3.06	3.34	3.59	3.83	4.63	4.63	4.63
<b>2021</b>										
Jan	-0.10	-0.24	-0.32	-0.35	-0.37	-0.39	-0.41	-0.44	-0.44	-0.44
<b>YTD</b>	<b>-0.10</b>	<b>-0.24</b>	<b>-0.32</b>	<b>-0.35</b>	<b>-0.37</b>	<b>-0.39</b>	<b>-0.41</b>	<b>-0.44</b>	<b>-0.44</b>	<b>-0.44</b>

The TSP added six new L Funds that have 5-year increments rather than the previous 10-year increments.

## Freely Associated States Restrictions

We list the mailing restrictions for Freely Associated States (FAS) in the Pull-Out section of the *Postal Bulletin*. All FAS Restrictions will be updated periodically.

### Freely Associated States

Mail addressed to freely associated states is subject to certain conditions or restrictions of mailing regarding content, preparation, and handling. The following FAS Restrictions table outlines these conditions as listed by each affected FAS ZIP Code™ through the use of footnoted mailing restrictions codes (see the [Restrictions](#) following the table). For more information on available extra services for FAS destinations, see *Mailing Standards of the United States Postal Service, Domestic Mail Manual (DMM®)*, part 503.

Acceptance clerks must use the table with the Retail System Software terminal to determine which FAS ZIP Codes are active and which conditions of mailing apply.

### FAS Restrictions Table

FAS Table	See Restrictions
96939	A, B
96940	A, B
96941	A, B
96942	A, B
96943	A, B
96944	A, B
96960	A, B
96970	A, B, D
Marshall Islands	C
Federated States of Micronesia	C

### RESTRICTIONS LEGEND

PS Form 2976, *Customs Declaration CN 22 – Sender's Declaration*

PS Form 2976-A, *Customs Declaration and Dispatch Note*

FAS = Freely Associated State

- A.** Bank currency (coin and paper) is prohibited.
- B.** Signature Confirmation, Signature Confirmation Restricted Delivery, Adult Signature Requested, Adult Signature Restricted Delivery, Certified Mail Adult Signature Required, and Certified Mail Adult Signature Restricted Delivery not available.
- C.** Collect on Delivery is prohibited.
- D.** Betel nut (Areca catechu) is prohibited.

— *Asia-Pacific Relations,  
Global Business, 2-25-21*

# Small Business Sales

## Business Connect Kits are Coming

**URGENT OPEN NOW!**

**BUSINESS CONNECT® MATERIALS ENCLOSED**

**WANT TO MAKE A BIG DIFFERENCE FOR A SMALL BUSINESS?**

**Inside:** Everything you need to host a successful in-person or virtual Grow Your Business Day event.

**#LEADtheWAY**

©2021 United States Postal Service®. All Rights Reserved. The Eagle Logo is among the many trademarks of the U.S. Postal Service®.

21Q2BCKITLBL

Postmasters and managers will soon receive a Business Connect® kit that offers strategies for promoting USPS® products and services to small businesses. The 2021 Business Connect Grow Your Business Day (GYBD) event kits were mailed the week of February 10, 2021.

Supervisors for Customer Services will receive a postcard with instructions on how to order their own Business Connect kit from the Material Distribution Center at [sfr.usps.gov/login.do](https://sfr.usps.gov/login.do).

The quarterly Business Connect kit includes the following materials:

- **Welcome Letter.** The Postal Service™ thanks you for your support.



Dear Postmasters and Managers and Supervisors, Customer Services,

I want to extend a big thank-you to all of you for taking the lead in your office and once again helping USPS own the holidays. Thanks to your efforts, many small businesses have learned how direct mail and Every Door Direct Mail® (EDDM®) services can help them promote their holiday sales and drive customers to their businesses. Every day, you are working to help save small businesses across the country, and we couldn't be prouder.

This quarter, we are continuing the "Help Save Main Street, USA" theme through the Small Business Association's annual "Small Business Week" campaign. Every year during this time, we ask that you continue to be a leader in your community by hosting Grow Your Business Day (GYBD) events.

This year, we are all having to adapt to doing business a little differently. Post Office leaders like you are having to find ways to continue meeting with our customers safely during this pandemic. Now that the holidays are over, this is the perfect time to have conversations with businesses in your local community by hosting a GYBD virtual or in-person event.

In this kit, you will find everything you need to host a successful GYBD event, including:

- A GYBD virtual or in-person event checklist to help you run a productive and safe event.
- A list of sales support materials available and instructions on how to order them.
- The "Business Connect" Guide" explaining why participating really matters.

Every day, you are demonstrating the #PowerofOne by setting the example to show how important generating new revenue is for the Postal Service. Motivating employees to follow your lead is critical to the success of our organization. One person can make a big difference. When you #LEADtheWAY, you're supporting USPS and helping save Main Street, USA.

Sincerely,

Mary P. Anderson  
Director, Small Business Engagement

Note for Supervisors, Customer Services: To order your own GYBD kit, please follow the steps on the Material Ordering Site (MOS) using SKU# 21Q2BCKIT.

©2021 United States Postal Service®. All Rights Reserved. The Eagle Logo is among the many trademarks of the U.S. Postal Service®.

21Q2BCKITVELCOMETR

Please Recycle

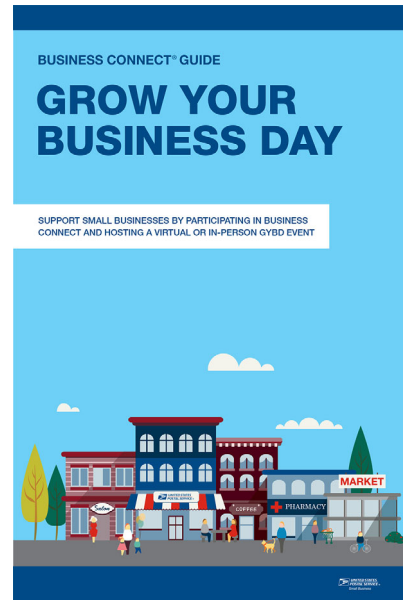
- **Business Connect Event Guide.** Includes everything you need to know to host a successful GYBD event.



- **Business Connect Solutions Guide.** Shows how to showcase USPS shipping and mailing services at GYBD events.



- **Business Connect Program Why Guide.** Provides the what, why, who, and how of the Business Connect program.



- **Virtual/Physical Event Flyers and Invitational Postcard.** Offers professionally-designed pieces to invite prospective customers to your virtual/physical events.



Each kit provides detailed information on how to engage with potential new customers, how to document these activities in the Business Connect Portal, and how to strengthen business relationships in the community.

Now is the time to show small businesses how USPS can help them grow.

— Small Business Engagement, Small Business Sales, 2-25-21



## Stamp Services

### Stamp Announcement 21-10: Espresso Drinks Stamps



©2020 USPS

On April 9, 2021, in Seattle, WA, the United States Postal Service® will issue the *Espresso Drinks* stamps (Forever® priced at the First-Class Mail® rate) in four designs, in a pressure-sensitive adhesive (PSA) double-sided booklet of 20 stamps (Item 683200). These stamps will go on sale nationwide April 9, 2021, and must not be sold or canceled before the first-day-of-issue.

The Postal Service™ celebrates America's love of coffee with four new stamps in a booklet of 20. Digital illustrations feature cups of four different drinks:

- Caffe latte,
- Espresso,
- Caffe mocha, and
- Cappuccino.

The names of the espresso drinks appear in art deco-inspired lettering above or below each cup. Art director Greg Breeding designed the stamps with original artwork by Terry Allen.

#### Availability to Post Offices: Item 683200, Espresso Drinks (Forever Priced at the First-Class Mail Rate) PSA Double-sided Booklet of 20 Stamps

Stamp Fulfillment Services will not make an automatic push distribution to Post Offices. Post Offices may begin ordering stamps before the first-day-of-issue through SFS Web at [sfsweb.usps.gov/sfsweb](https://sfsweb.usps.gov/sfsweb).

#### How to Order the First-Day-of-Issue Postmark

Customers have 120 days to obtain the first-day-of-issue postmark by mail. They may purchase new stamps at their local Post Office™ or at The Postal Store® website at [usps.com/shop](https://usps.com/shop). They must affix the stamps to envelopes of their choice, address the envelopes (to themselves or others), and place them in a larger envelope addressed to:

FDI – Espresso Drinks Stamps  
 USPS Stamp Fulfillment Services  
 8300 NE Underground Drive, Suite 300  
 Kansas City, MO 64144-9900

After applying the first-day-of-issue postmark, the Postal Service will return the envelopes through the mail. There is no charge for the postmark up to a quantity of 50. There is a 5-cent charge for each additional postmark over 50. All orders must be postmarked by August 9, 2021.

#### How to Order First-Day Covers

The Postal Service also offers first-day covers for new stamp issues and Postal Service stationery items postmarked with the official first-day-of-issue cancellation. Each item has an individual catalog number and is offered in the *USA Philatelic* catalog and online at [usps.com/shop](https://usps.com/shop). Customers may register to receive a free *USA Philatelic* catalog online at [usps.com/philatelic](https://usps.com/philatelic).

**Locally produced items are not authorized. Only merchandise that has been approved and assigned an item number by Headquarters Retail Marketing may be produced and sold.**

Issue:	<i>Espresso Drinks</i> Stamps
Item Number:	683200
Denomination & Type of Issue	First-Class Mail Forever
Format:	Double-sided Booklet of 20 (4 designs)
Series:	N/A
Issue Date & City:	April 9, 2021, Seattle, WA 98134
Art Director:	Greg Breeding, Charlottesville, VA
Designer:	Greg Breeding, Charlottesville, VA
Artist:	Terry Allen, Wappingers Falls, NY
Modeler:	Joseph Sheeran
Manufacturing Process:	Offset
Printer:	Ashton Potter (USA) Ltd. (APU)
Press Type:	Muller A76
Stamps per Booklet:	20
Print Quantity:	200,000,000 stamps
Paper Type:	Nonphosphored Type III, Block Tag
Adhesive Type:	Pressure-sensitive
Stamp Orientation:	Vertical
Image Area (w x h):	0.73 x 0.84 in./18.542 x 21.336 mm
Stamp Size (w x h):	0.87 x .98 in./22.098 x 24.892 mm
Full Booklet Size (w x h):	5.52 x 1.96 in./140.208 x 49.784 mm
Colors:	Black, Cyan, Magenta, Yellow
Plate Size:	1040 stamps per revolution
Plate Number:	"P" followed by four (4) single digits
Marginal Markings:	Header: "Espresso Drinks" Twenty First-Class Forever Stamps • USPS logo • Plate number in peel strip area • ©2020 USPS in peel strip area • Barcode • Promotional text in peel strip area

— Stamp Services, Marketing, 2-25-21

## Stamp Stock Items Withdrawn from Regular Sale and from Sale at Philatelic Centers

Effective close-of-business March 31, 2021, all Post Offices, stations, branches, postal stores, vending outlets, and authorized philatelic centers must:

- Completely withdraw the stamp stock items listed in the table and their related vending and store-prepared stamp items from sale, and
- Prepare them for destruction.

Only during your return cycle may you submit items to destruction sites according to local established procedures, under the guidelines in Handbook F-101, *Field Accounting Procedures*, and subchapter 11-6, "Returning Stock to the Stamp Distribution Office or Stamp Distribution Center."

Do not permit sales of the stamp stock items and their related vending and store-prepared stamp items listed in the table at retail counters and outlets after March 31, 2021.

## Stamps to be Completely Withdrawn from Sale

Item	Description
115400	(Forever) <i>Purple Heart</i> PSA 2012
120800	\$7.75 <i>Big Bend</i> Priority Mail®
222100	(Forever) <i>Fanciful Flowers</i> Stamped Card
228100	(Forever) <i>Fanciful Flowers</i> Double Reply Stamped Card
228400	(Forever) <i>Fanciful Flowers</i> Stamped Card Uncut Sheet/40
474600	(Forever) <i>John F. Kennedy</i> Stamp
474900	(Forever) <i>Have a Ball!</i> Full Pane of 16
475300	(Forever) <i>Total Eclipse of the Sun</i> Full Pane of 16
477300	(Forever) <i>Sally Ride</i> Stamp
680000	(Forever) <i>Cactus Flowers</i> Booklet/20
789800	(10c) <i>Snowflake</i> Presort PSA Coil/10,000

— Stamp Services, Marketing, 2-25-21

### Pictorial Postmarks Announcement

As a community service, the Postal Service™ offers pictorial postmarks to commemorate local events celebrated in communities throughout the nation. A list of events for which pictorial postmarks are authorized appears on the following pages. The sponsor of the pictorial postmark appears in italics under the date. Also provided are illustrations of these postmarks.

People attending these local events may obtain the postmark in person at the temporary Post Office™ station established there. Those who cannot attend the event but who wish to obtain the postmark may submit a mail order request. Pictorial postmarks are available only for the dates indicated, and *requests must be postmarked no later than 30 days following the requested pictorial postmark date.*

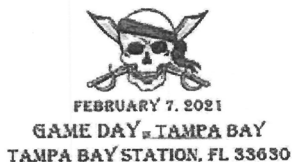
All requests must include a stamped envelope or postcard bearing at least the minimum First-Class Mail® postage. Items submitted for postmark may not include

postage issued after the date of the requested postmark. Such items will be returned unserved.

Customers wishing to obtain a postmark must affix stamps to any envelope or postcard of their choice, address the envelope or postcard to themselves or others, insert a card of postcard thickness in envelopes for sturdiness, and tuck in the flap. Place the envelope or postcard in a larger envelope and address it to: Pictorial Postmarks, followed by the Name of the Station, Address, City, State, ZIP+4® Code, as listed next to the postmark.

Customers can also send stamped envelopes and postcards without addresses for postmark, as long as they supply a larger envelope with adequate postage and their return address. After applying the pictorial postmark, the Postal Service returns the items (with or without addresses) under addressed protective cover.

The following pictorial postmarks have been extended for 30 days:



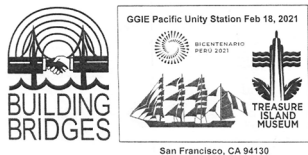
February 7, 2021  
*United States Postal Service*  
 Game Day in Tampa Bay Tampa Bay Station, FL 33630  
 Cancellation Services  
 8300 NE Underground Drive, Pillar 210, Suite 300  
 Kansas City, MO 64144-9998



February 12, 2021  
*USPS — San Antonio Postal Customer Council*  
 Love Station  
 Postmaster  
 10410 Perrin Beitel Road  
 San Antonio, TX 78284-9998



February 14, 2021  
*Friends of Hartville*  
 Valentine Station  
 Postmaster  
 PO Box 9998  
 Hartville, WY 82215-9998

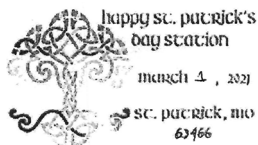


February 18, 2021  
*United States Postal Service*  
 Building Bridges GGIE Pacific Unity Station  
 Postmaster  
 PO Box 7838  
 San Francisco, CA 94120-7838



February 18, 2021

*USPS — Governmental Relations/C.S.M.*  
Perseverance on Mars Station  
Customer Relations Coordinator  
28201 Franklin Parkway  
Santa Clarita, CA 91383-9998



March 1–31, 2021

*Shrine of St. Patrick*  
Happy Saint Patrick's Day Station  
Postmaster  
111 West Commercial Street  
Kahoka, MO 63445-9998



March 6, 2021

*McKinley Stamp Club Exhibition*  
McKinley Exhibition Station  
Postmaster  
4735 Massillon Road  
Green, OH 44232-9998



March 7, 2021

*McKinley Stamp Club Exhibition*  
McKinley Exhibition Station  
Postmaster  
4735 Massillon Road  
Green, OH 44232-9998

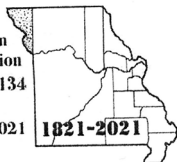


March 8, 2021

*The City of Parsons Committee*  
Parson, KS 67357 Station  
Postmaster  
PO Box 9998  
Parsons, KS 67357-9998

St. Louis Stamp  
Exposition  
Bicentennial Station  
St. Louis, MO 63134

March 19, 2021



March 19–21, 2021

*St. Louis Stamp Expo*  
Saint Louis Stamp  
Exposition Bicentennial  
Station  
Retail  
1720 Market Street,  
Room 2033  
St. Louis, MO 63155-9998

— *Stamp Services,  
Marketing, 2-25-21*

### How to Order the First-Day-of-Issue Digital Color or Traditional Postmarks

Customers have 120 days to obtain the first-day-of-issue postmarks by mail. Each cover must have sufficient postage to meet First-Class Mail® requirements. Customers may purchase new stamps at their local Post Office™, by phone at 800-782-6724, or on The Postal Store® website at [usps.com/shop](https://usps.com/shop).

#### Digital Color Postmarks

Only select stamp issues offer a digital color postmark. Customers may submit #6 or #10 envelopes constructed of paper rated as "laser safe." The Postal Service™ recommends envelopes of 80-pound Accent Opaque, acid-free, 9/16-inch side seams with no glue on the flap. The maximum size of all digital color postmarks is 2 inches (vertically) by 4 inches (horizontally). Allow sufficient space on the envelope to accommodate the postmark. Do not use self-adhesive labels for addresses on the envelope. Two test envelopes must be included. There is a minimum of 10 envelopes at 50 cents per postmark required at the time of servicing. Customers must submit a check, money order, or credit card for payment.

The Postal Service reserves the right to not accept hand-painted and other cachet envelopes that are not compatible with our digital color postmark equipment. The Postal Service also reserves the right to substitute traditional black rubber postmarks if use of nonspecified envelopes results in poor image quality or damage to equipment.

Customers must affix the stamps to the envelopes and address them to themselves or others for return through the mail. Or, they may include an additional self-addressed return envelope, large enough to accommodate their canceled items, with sufficient postage affixed for return of

their postmarked items. Address customer requests for digital color postmarks to:

FDOI – (Name of Stamp Issue)  
USPS Stamp Fulfillment Services  
8300 NE Underground Drive, Suite 300  
Kansas City, MO 64144-9900

After applying the first-day-of-issue postmark, the Postal Service will return the envelopes to the customer by U.S. Mail®.

#### Traditional Postmarks

Customers must affix the stamps to the envelopes and address them to themselves or others for return through the mail. Or, they may include an additional self-addressed return envelope, large enough to accommodate their canceled items, with sufficient postage affixed for return of their postmarked items. Address customer requests for traditional postmarks to:

FDOI – (Name of Stamp Issue)  
USPS Stamp Fulfillment Services  
8300 NE Underground Drive, Suite 300  
Kansas City, MO 64144-9900

After applying the first-day-of-issue postmark, the Postal Service will return the envelopes to the customer by U.S. Mail™. There is no charge for the first 50 postmarks. There is a 5-cent charge for each additional postmark over 50. Customers must submit a check, money order, or credit card for payment.

Locally produced items are not authorized. Only merchandise that has been approved and assigned an item number by Headquarters Retail Marketing may be produced and sold.



Digital Color Pictorial

FDOI – Drug Free USA Stamp  
USPS Stamp Fulfillment Services  
8300 NE Underground Drive, Suite 300  
Kansas City, MO 64144-9900  
February 27, 2021



Black and White Pictorial

FDOI – Drug Free USA Stamp  
USPS Stamp Fulfillment Services  
8300 NE Underground Drive, Suite 300  
Kansas City, MO 64144-9900  
February 27, 2021



Digital Color Pictorial

**FDOI – Love 2021 Stamp**

USPS Stamp Fulfillment Services  
8300 NE Underground Drive, Suite 300  
Kansas City, MO 64144-9900

May 14, 2021



Black and White Pictorial

**FDOI – Love 2021 Stamp**

USPS Stamp Fulfillment Services  
8300 NE Underground Drive, Suite 300  
Kansas City, MO 64144-9900

May 14, 2021



Digital Color Pictorial

**FDOI – Castillo de San Marcos Stamp**

USPS Stamp Fulfillment Services  
8300 NE Underground Drive, Suite 300  
Kansas City, MO 64144-9900

May 24, 2021



Digital Color Pictorial

**FDOI – August Wilson Stamp**

USPS Stamp Fulfillment Services  
8300 NE Underground Drive, Suite 300  
Kansas City, MO 64144-9900

May 28, 2021



Black and White Pictorial

**FDOI – August Wilson Stamp**

USPS Stamp Fulfillment Services  
8300 NE Underground Drive, Suite 300  
Kansas City, MO 64144-9900

May 28, 2021



Digital Color Pictorial

**FDOI – Lunar New Year – Year of the Ox Stamp**

USPS Stamp Fulfillment Services  
8300 NE Underground Drive, Suite 300  
Kansas City, MO 64144-9900

June 2, 2021

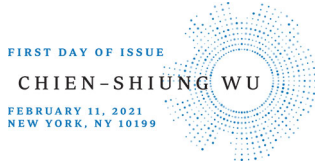


Black and White Pictorial

**FDOI – Lunar New Year – Year of the Ox Stamp**

USPS Stamp Fulfillment Services  
8300 NE Underground Drive, Suite 300  
Kansas City, MO 64144-9900

June 2, 2021



Digital Color Pictorial

**FDI – Chien-Shiung Wu Stamp**  
 USPS Stamp Fulfillment Services  
 8300 NE Underground Drive, Suite 300  
 Kansas City, MO 64144-9900

June 11, 2021



Black and White Pictorial

**FDI – Chien-Shiung Wu Stamp**  
 USPS Stamp Fulfillment Services  
 8300 NE Underground Drive, Suite 300  
 Kansas City, MO 64144-9900

June 11, 2021



Digital Color Pictorial

**FDI – Garden Beauty Stamps**  
 USPS Stamp Fulfillment Services  
 8300 NE Underground Drive, Suite 300  
 Kansas City, MO 64144-9900

June 23, 2021



Black and White Pictorial

**FDI – Garden Beauty Stamps**  
 USPS Stamp Fulfillment Services  
 8300 NE Underground Drive, Suite 300  
 Kansas City, MO 64144-9900

June 23, 2021



Digital Color Pictorial

**FDI – Espresso Drinks Stamps**  
 USPS Stamp Fulfillment Services  
 8300 NE Underground Drive, Suite 300  
 Kansas City, MO 64144-9900

August 9, 2021

– Stamp Services, Marketing, 2-25-21

## Supply Management

### USPS Headquarters Managers and Field Installation Heads: March 2021 Annual Capital Property Review

The next Annual Capital Property Review takes place March 1–26, 2021. If you are the Material Accountability Officer or responsible for conducting the Annual Capital Property Review and you need training or guidance, please contact your supporting Asset Accountability Service Center at [blue.usps.gov/supplymanagement/am\\_aasc\\_home.htm](https://blue.usps.gov/supplymanagement/am_aasc_home.htm).

– Asset Management Performance and Accountability,  
 Supply Management, 2-25-21



UNITED STATES  
POSTAL SERVICE

475 L'ENFANT PLAZA SW  
WASHINGTON DC 20260-5540

First-Class Mail  
Postage & Fees Paid  
USPS  
Permit No. G-10

Personalize Letters and Cards  
with the **Love 2021**  
Forever® Stamp



On Sale Nationwide: January 14, 2021

